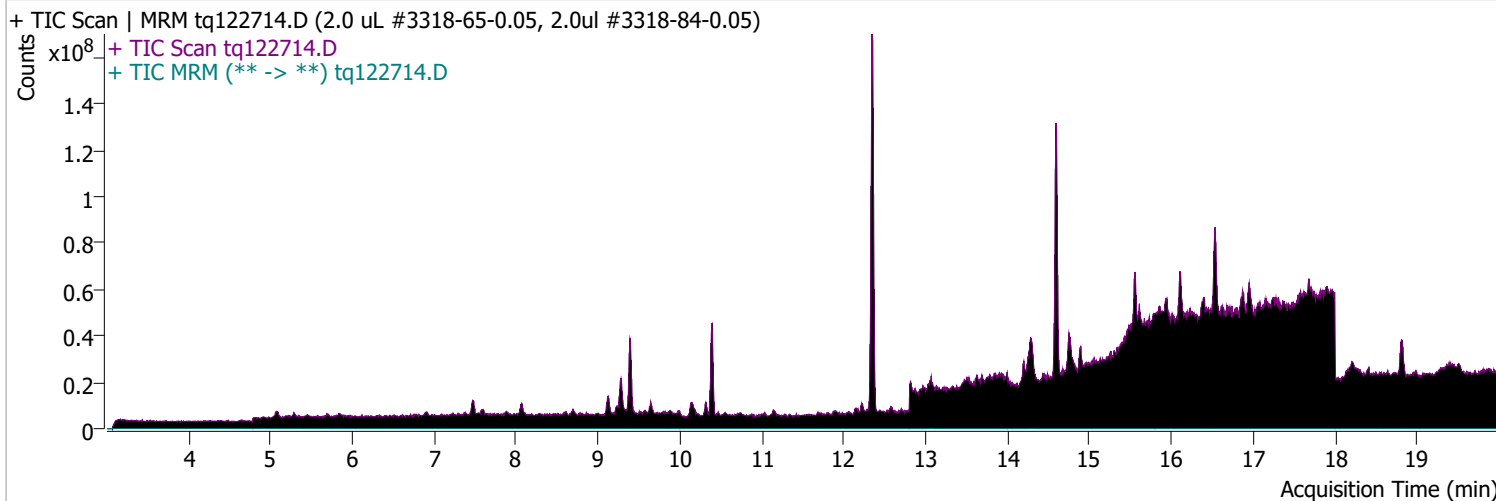


Quantitative Analysis Sample Report

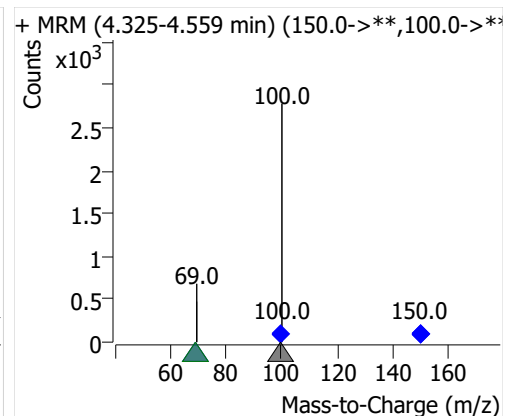
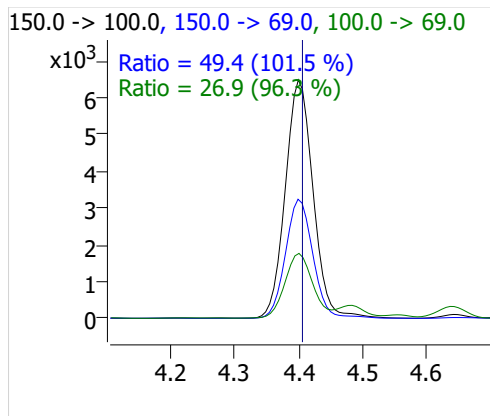
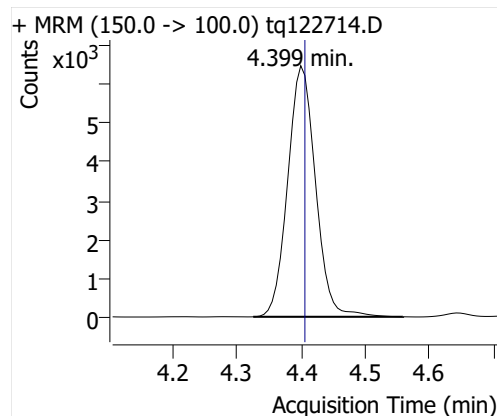
Batch Path D:\MassHunter\GCMS\1\data\27dec22a\QuantResults\tq22m1227a.batch.bin
Analysis Time 1/3/2023 2:39 PM **Analyst Name** TAI\us32_usr_ins22923
Report Time 1/5/2023 3:16:25 PM **Reporter Name** TAI\us32_usr_ins22923
Last Calib Update 1/3/2023 2:39 PM **Batch State** Processed
Quant Batch Version 10.1 **Quant Report Version** 10.1
Acq. Time 12/27/2022 2:36 PM **Data File** tq122714.D
Sample Type Cal **Sample Name** 2.0 uL #3318-65-0.05, 2.0uL #3318-84-0.05
Dilution 1 **Acq. Method** tq22m1209

Sample Chromatogram



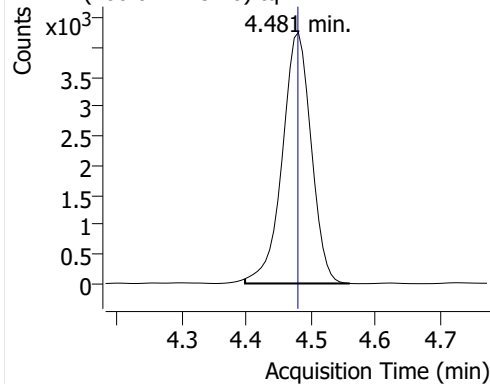
Compound	ISTD	RT	Resp.	ISTD Resp.	Resp. Ratio	Final Conc	Units
PFBA	6:2 FTOH-C13	4.399	19499	44557	0.4376	0.1306	ng
PFPeA	6:2 FTOH-C13	4.481	13275	44557	0.2979	0.1002	ng
PFHxA	6:2 FTOH-C13	4.639	6026	44557	0.1352	0.0977	ng
PFHpA	6:2 FTOH-C13	4.920	4361	44557	0.0979	0.1037	ng
PFOA	6:2 FTOH-C13	5.348	3307	44557	0.0742	0.1230	ng
4:2 FTOH	6:2 FTOH-C13	11.694	1810	44557	0.0406	0.0863	ng
5:2sFTOH	6:2 FTOH-C13	11.757	1015	44557	0.0228	0.0962	ng
7:2sFTOH	6:2 FTOH-C13	13.064	2059	44557	0.0462	0.0900	ng
6:2 FTOH	6:2 FTOH-C13	13.090	4945	44557	0.1110	0.1212	ng
8:2 FTOH-C13	6:2 FTOH-C13	14.300	18085	44557	0.4059	1.0421	ng
8:2 FTOH	6:2 FTOH-C13	14.300	924	44557	0.0207	0.0799	ng
10:2 FTOH	6:2 FTOH-C13	15.369	585	44557	0.0131	0.1204	ng
12:2 FTOH	6:2 FTOH-C13	16.357	2240	44557	0.0503	0.1202	ng
NMeFOSA	6:2 FTOH-C13	18.830	7277	44557	0.1633	0.1026	ng
NEtFOSA	6:2 FTOH-C13	18.831	6470	44557	0.1452	0.1007	ng

PFBA

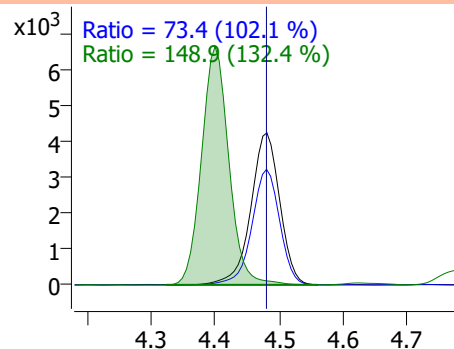


PFPeA

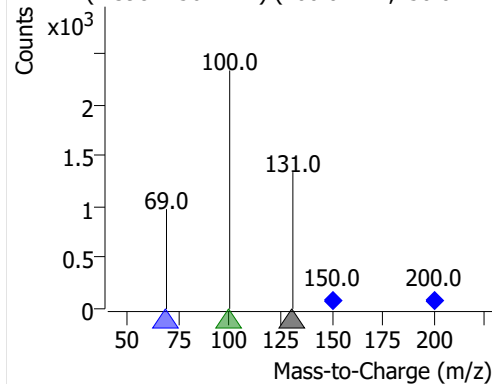
+ MRM (200.0 -> 131.0) tq122714.D



200.0 -> 131.0, 200.0 -> 69.0, 150.0 -> 100.0

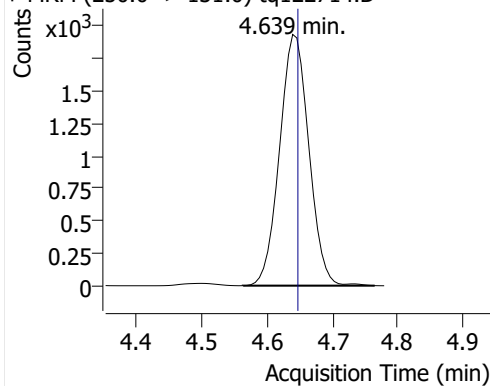


+ MRM (4.398-4.561 min) (200.0->**,150.0->**)

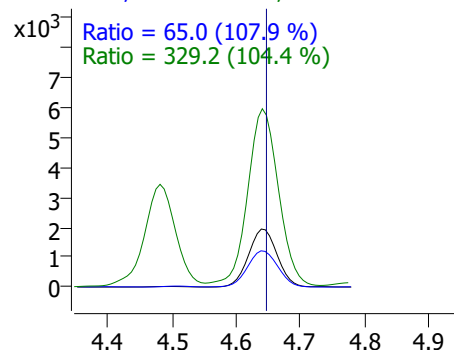


PFHxA

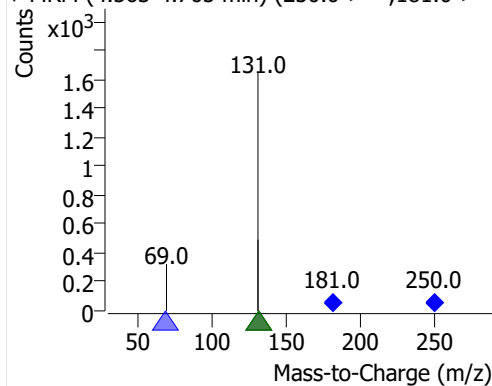
+ MRM (250.0 -> 131.0) tq122714.D



250.0 -> 131.0, 250.0 -> 69.0, 181.0 -> 131.0

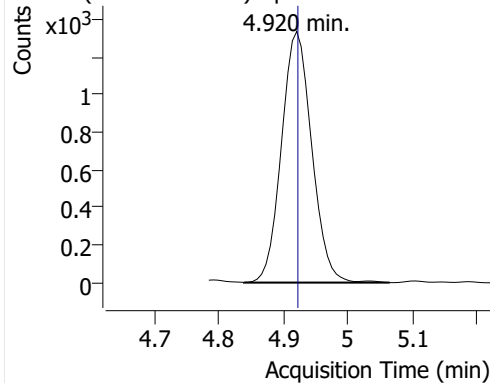


+ MRM (4.563-4.765 min) (250.0->**,181.0->**)

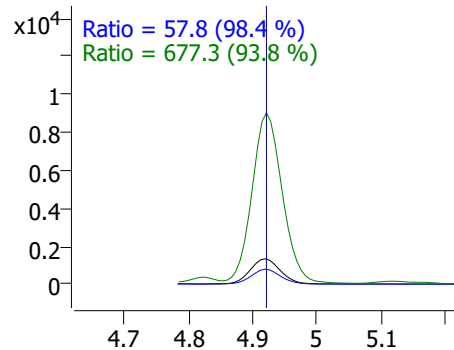


PFHpA

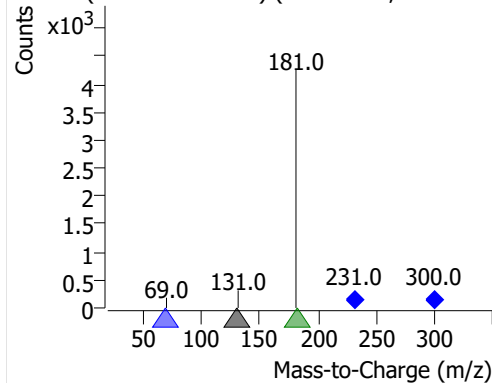
+ MRM (300.0 -> 131.0) tq122714.D



300.0 -> 131.0, 300.0 -> 69.0, 231.0 -> 181.0

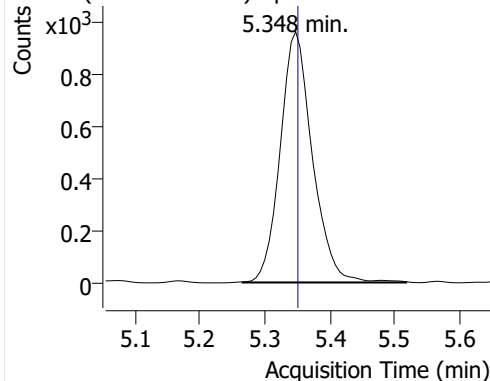


+ MRM (4.838-5.064 min) (300.0->**,231.0->**)

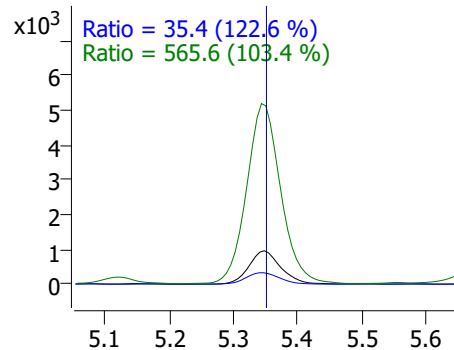


PFOA

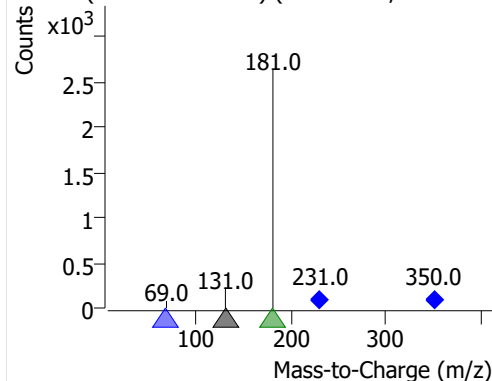
+ MRM (350.0 -> 131.0) tq122714.D



350.0 -> 131.0, 350.0 -> 69.0, 231.0 -> 181.0

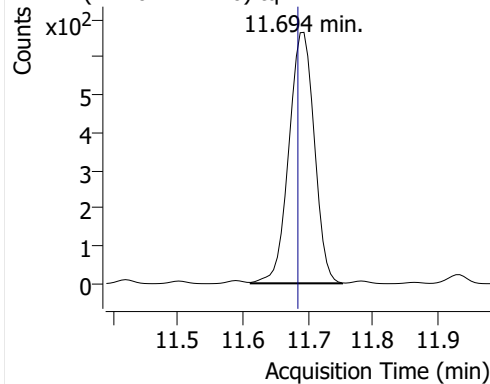


+ MRM (5.266-5.518 min) (350.0->**,231.0->**)

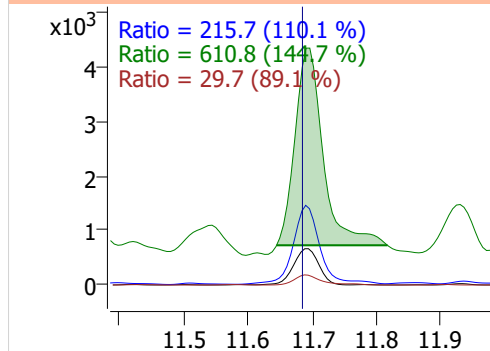


4:2 FTOH

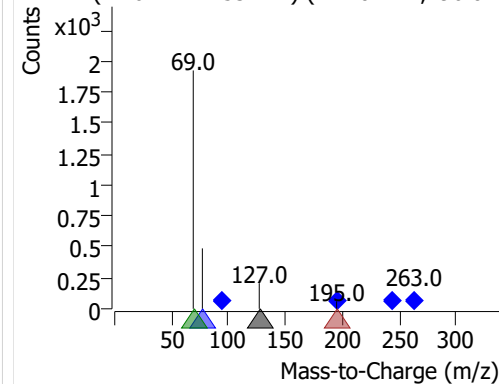
+ MRM (244.0 -> 127.0) tq122714.D



244.0 -> 127.0, 196.0 -> 77.0, 95.0 -> 69.0, 263.0 -> 127.0

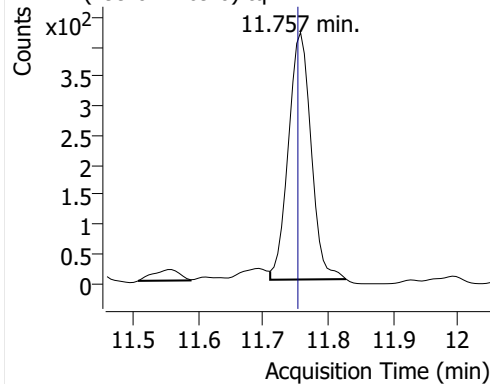


+ MRM (11.612-11.753 min) (244.0->**,196.0->*

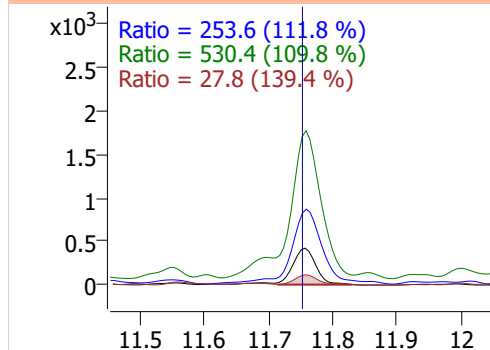


5:2sFTOH

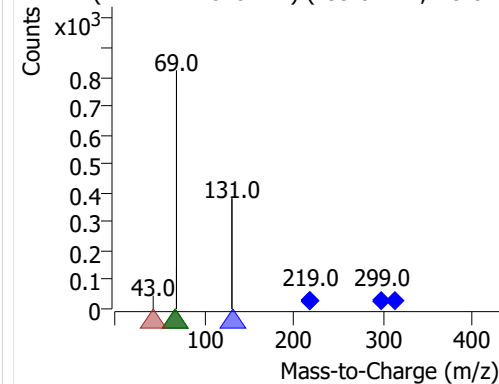
+ MRM (299.0 -> 69.0) tq122714.D



299.0 -> 69.0, 219.0 -> 131.0, 219.0 -> 69.0, 319.0 -> 131.0

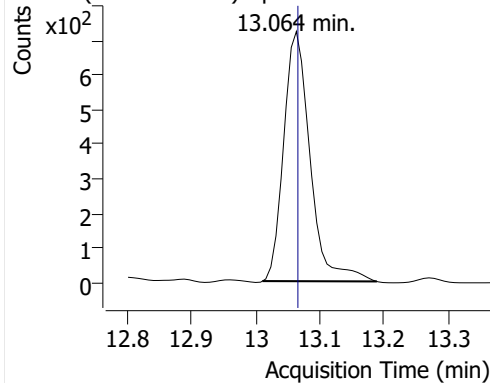


+ MRM (11.711-11.828 min) (299.0->**,219.0->*

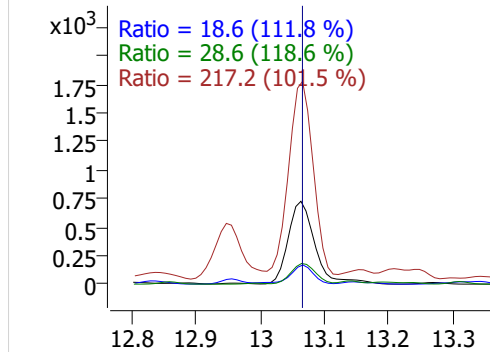


7:2sFTOH

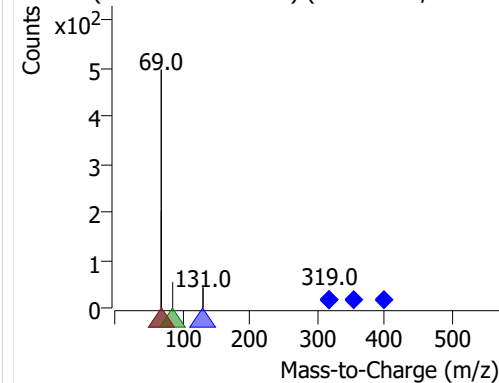
+ MRM (399.0 -> 69.0) tq122714.D



399.0 -> 69.0, 319.0 -> 131.0, 355.0 -> 86.0, 319.0 -> 69.0

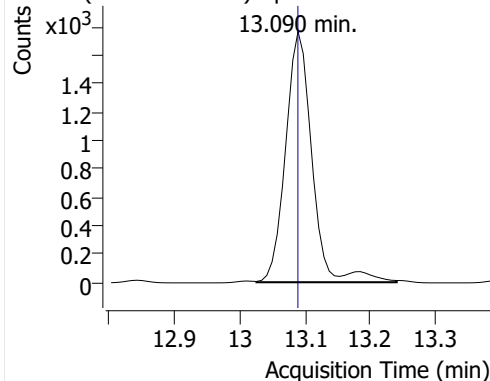


+ MRM (13.011-13.189 min) (399.0->**,319.0->*

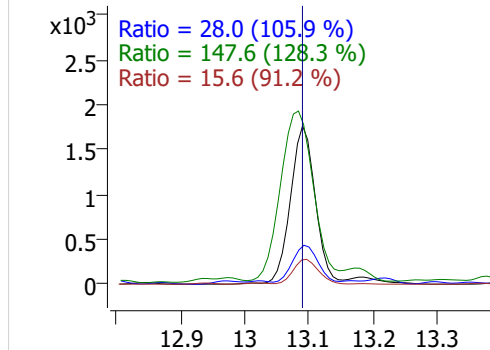


6:2 FTOH

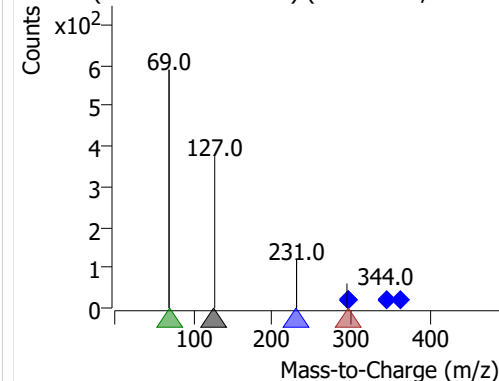
+ MRM (344.0 -> 127.0) tq122714.D



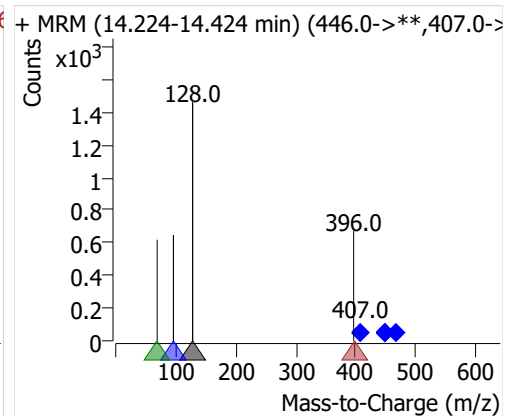
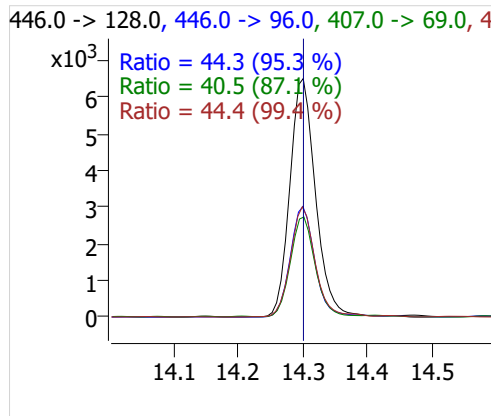
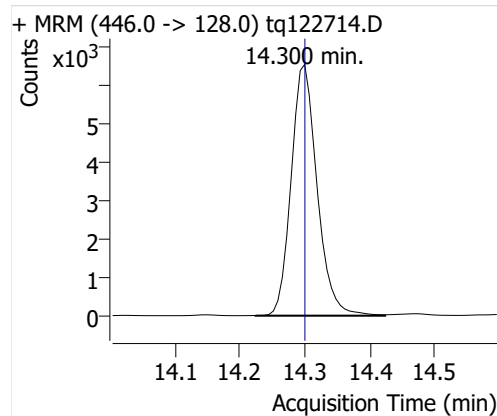
344.0 -> 127.0, 295.0 -> 231.0, 295.0 -> 69.0, 344.0 -> 127.0



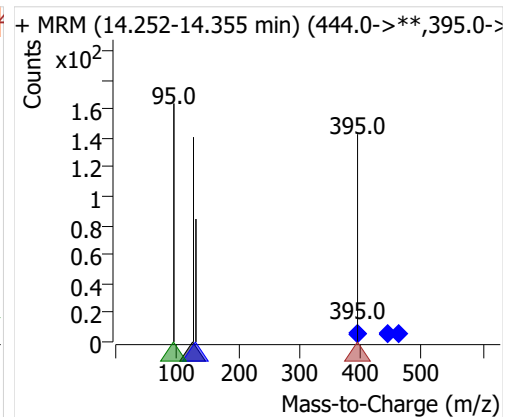
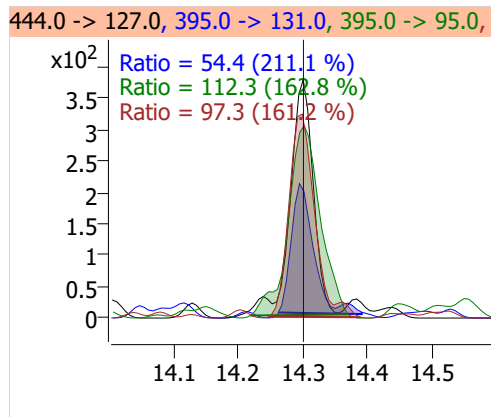
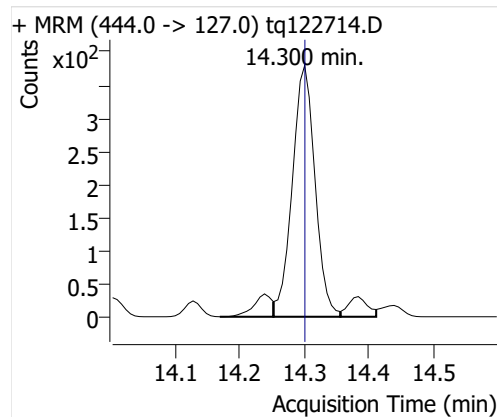
+ MRM (13.026-13.240 min) (344.0->**,295.0->*



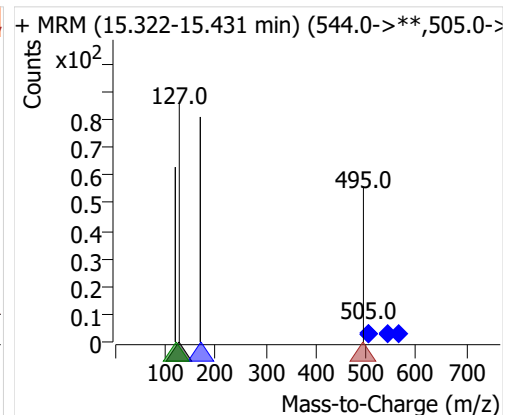
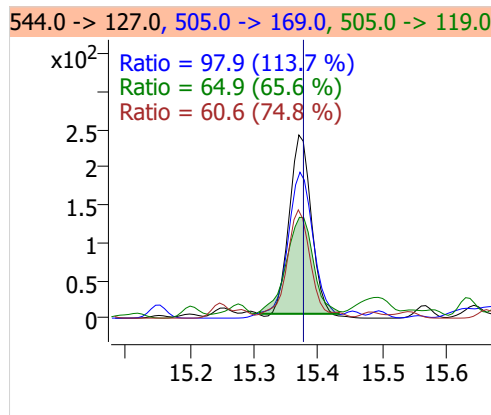
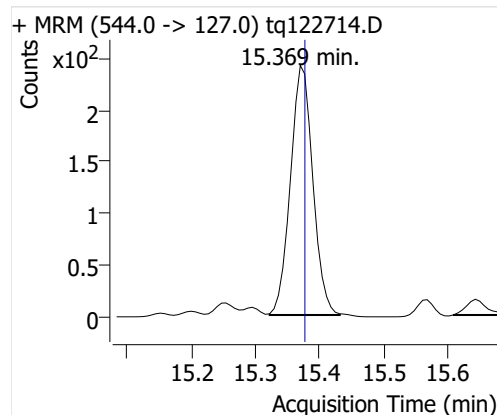
8:2 FTOH-C13



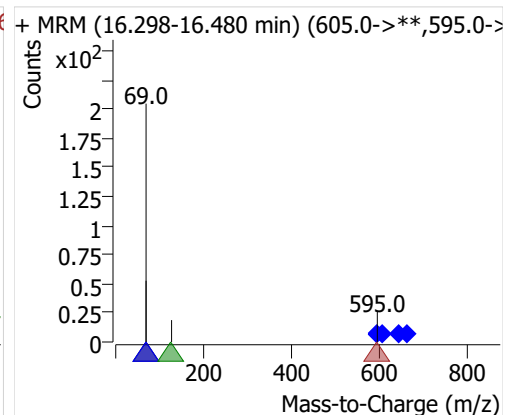
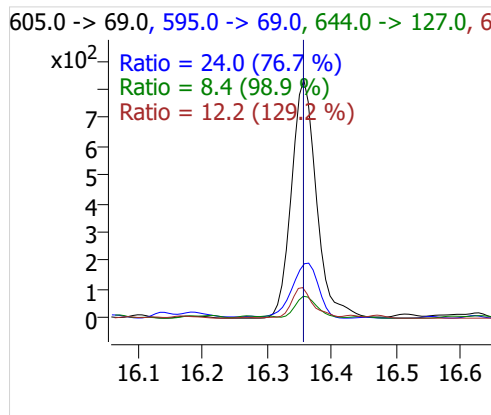
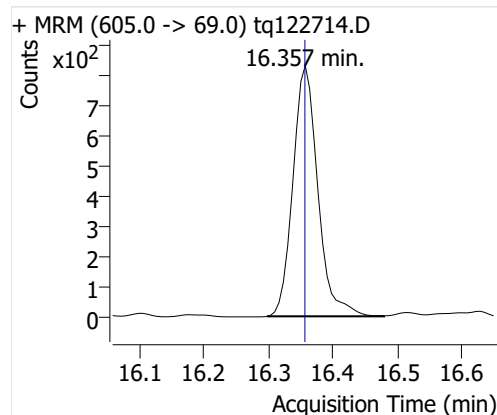
8:2 FTOH



10:2 FTOH

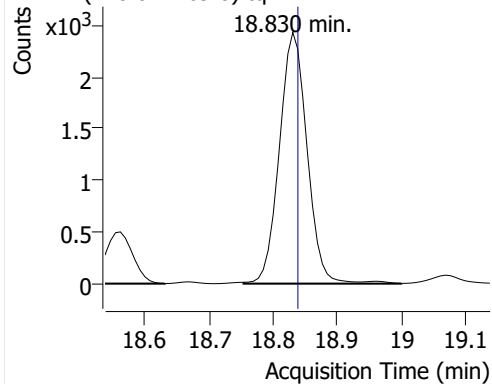


12:2 FTOH

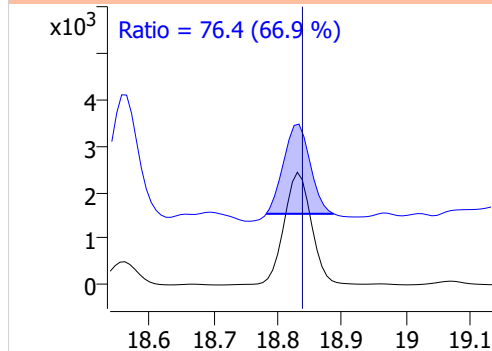


NMeFOSA

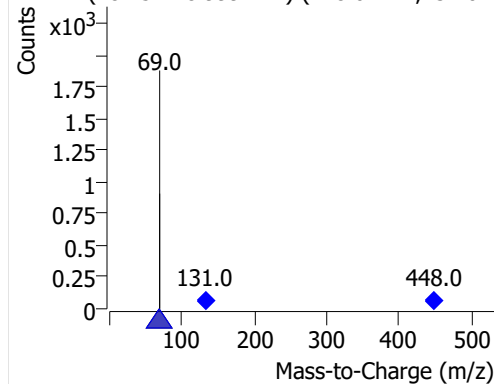
+ MRM (448.0 -> 69.0) tq122714.D



448.0 -> 69.0, 131.0 -> 69.0

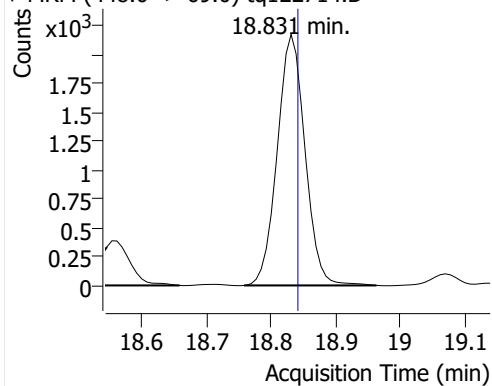


+ MRM (18.754-18.999 min) (448.0->**,131.0->

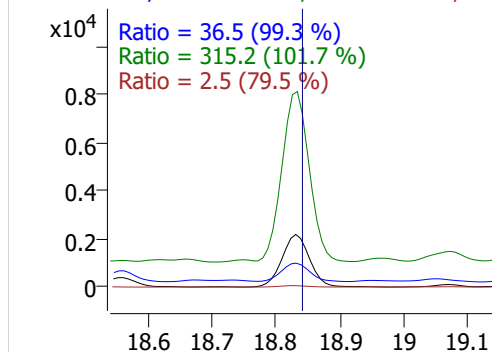


NEtFOSA

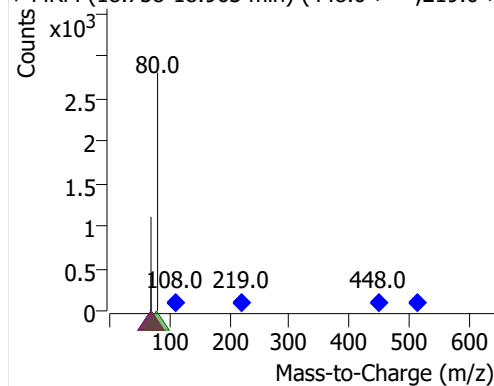
+ MRM (448.0 -> 69.0) tq122714.D



448.0 -> 69.0, 219.0 -> 69.0, 108.0 -> 80.0, 513.0 -> 80.0



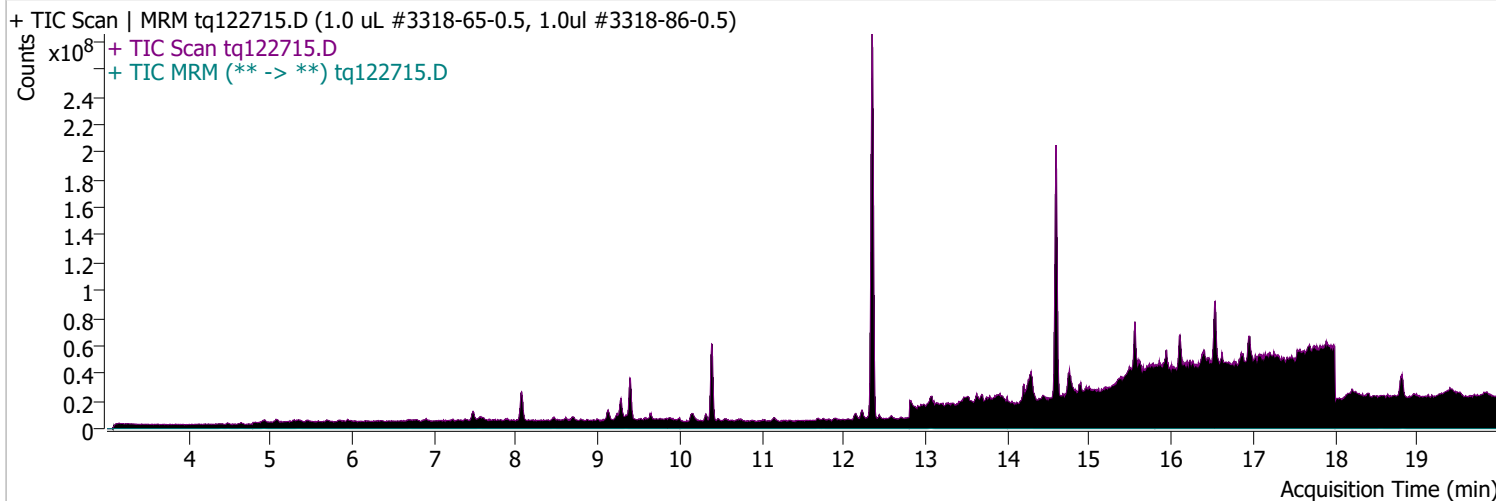
+ MRM (18.758-18.963 min) (448.0->**,219.0->



Quantitative Analysis Sample Report

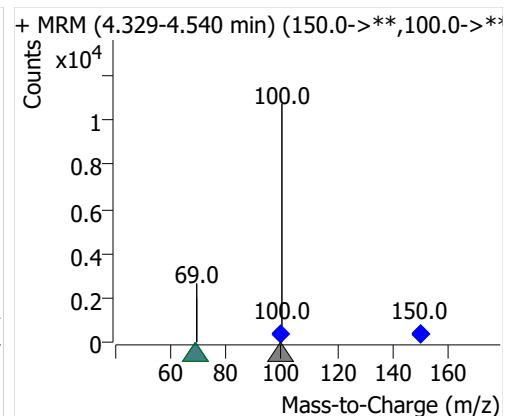
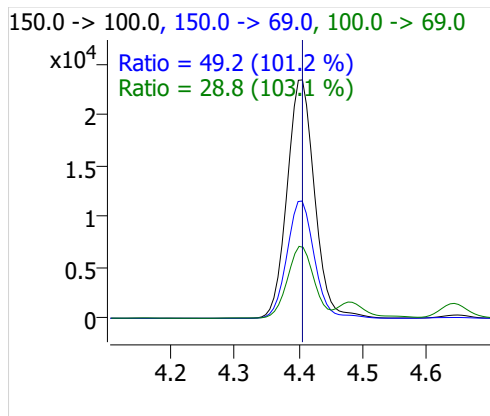
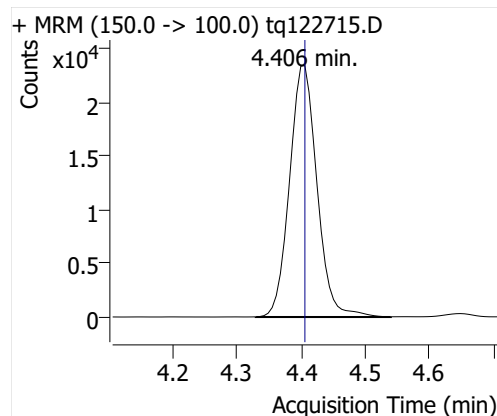
Batch Path D:\MassHunter\GCMS\1\data\27dec22a\QuantResults\tq22m1227a.batch.bin
 Analysis Time 1/3/2023 2:39 PM Analyst Name TAI\us32_usr_ins22923
 Report Time 1/5/2023 3:16:28 PM Reporter Name TAI\us32_usr_ins22923
 Last Calib Update 1/3/2023 2:39 PM Batch State Processed
 Quant Batch Version 10.1 Quant Report Version 10.1
 Acq. Time 12/27/2022 2:59 PM Data File tq122715.D
 Sample Type Cal Sample Name 1.0 uL #3318-65-0.5, 1.0uL #3318-86-0.5
 Dilution 1 Acq. Method tq22m1209

Sample Chromatogram

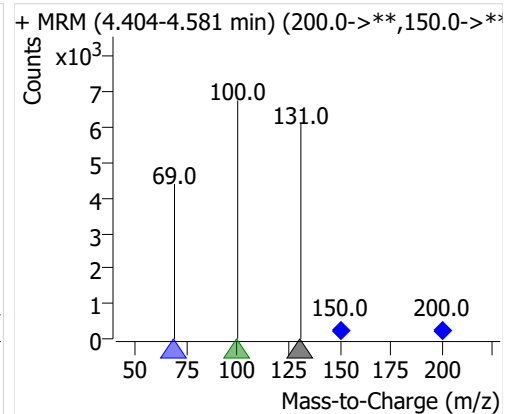
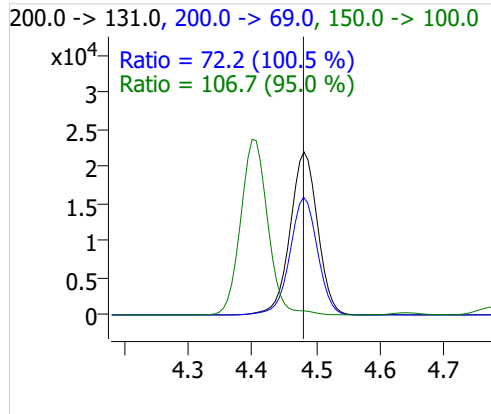
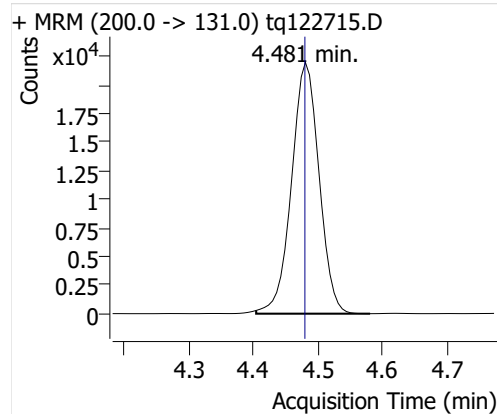


Compound	ISTD	RT	Resp.	ISTD Resp.	Resp. Ratio	Final Conc	Units
PFBA	6:2 FTOH-C13	4.406	69829	44357	1.5742	0.4698	ng
PFPeA	6:2 FTOH-C13	4.481	65223	44357	1.4704	0.4946	ng
PFHxA	6:2 FTOH-C13	4.639	30095	44357	0.6785	0.4901	ng
PFHpA	6:2 FTOH-C13	4.920	20495	44357	0.4621	0.4894	ng
PFOA	6:2 FTOH-C13	5.348	12728	44357	0.2869	0.4754	ng
4:2 FTOH	6:2 FTOH-C13	11.688	11510	44357	0.2595	0.5513	ng
5:2sFTOH	6:2 FTOH-C13	11.758	5571	44357	0.1256	0.5300	ng
7:2sFTOH	6:2 FTOH-C13	13.064	12147	44357	0.2738	0.5332	ng
6:2 FTOH	6:2 FTOH-C13	13.090	18751	44357	0.4227	0.4617	ng
8:2 FTOH-C13	6:2 FTOH-C13	14.300	17080	44357	0.3851	0.9886	ng
8:2 FTOH	6:2 FTOH-C13	14.300	5665	44357	0.1277	0.4921	ng
10:2 FTOH	6:2 FTOH-C13	15.370	2514	44357	0.0567	0.5200	ng
12:2 FTOH	6:2 FTOH-C13	16.357	8964	44357	0.2021	0.4833	ng
NMeFOSA	6:2 FTOH-C13	18.830	34751	44357	0.7834	0.4920	ng
NEtFOSA	6:2 FTOH-C13	18.831	31917	44357	0.7195	0.4992	ng

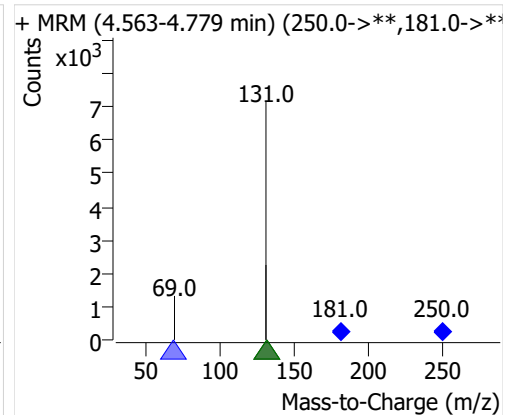
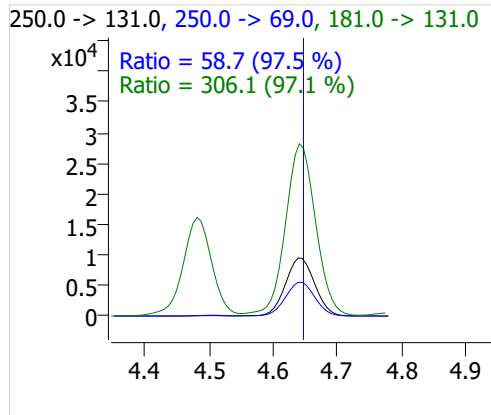
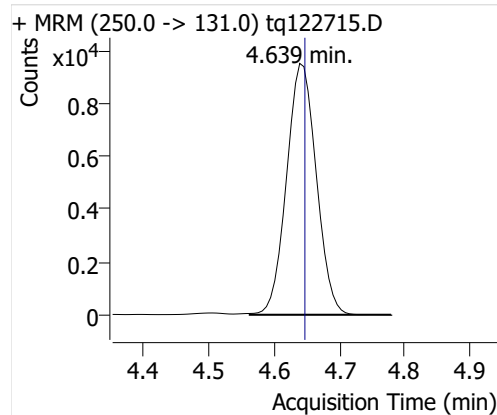
PFBA



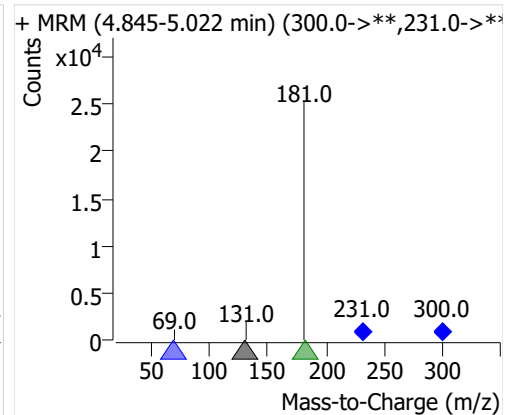
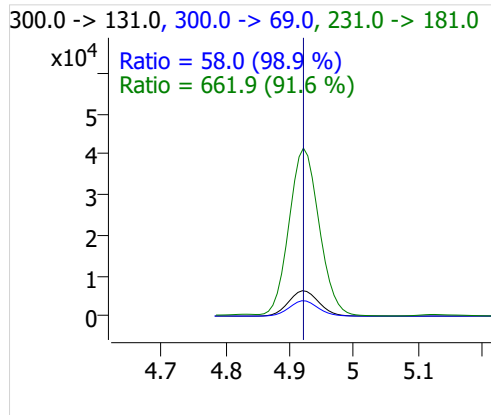
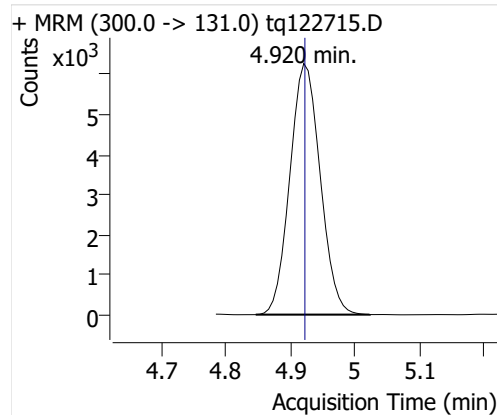
PFPeA



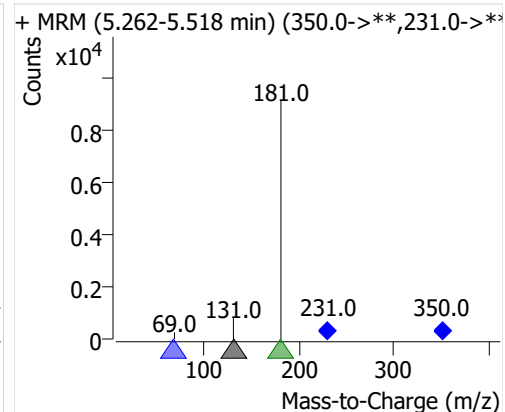
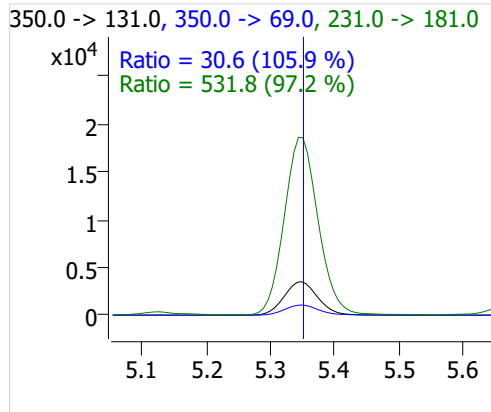
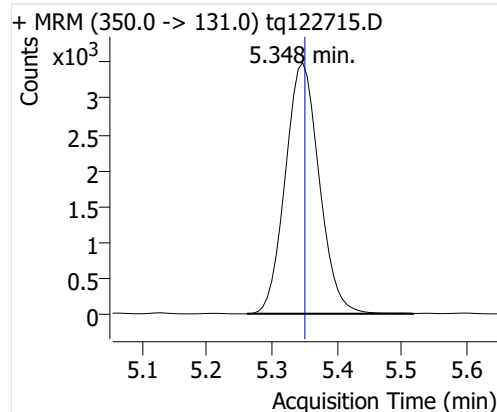
PFHxA



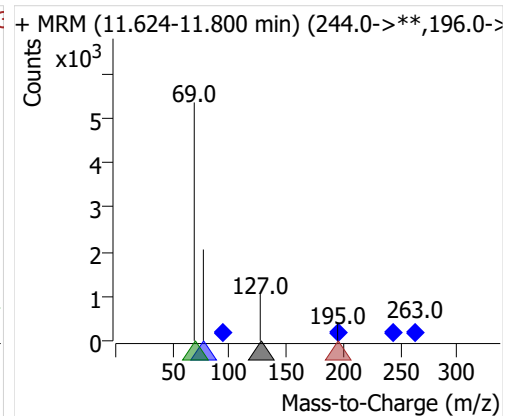
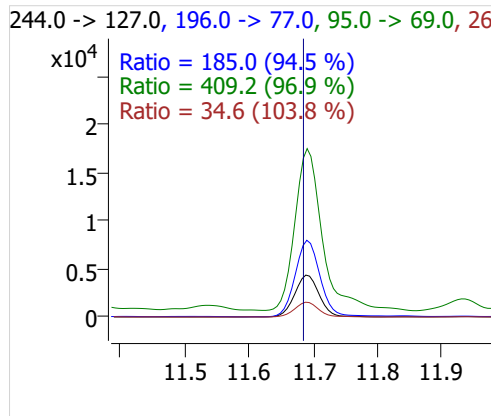
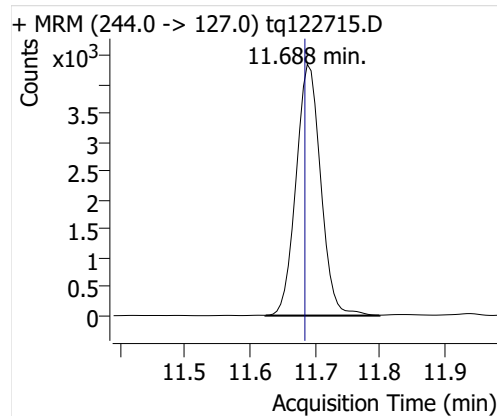
PFHpA



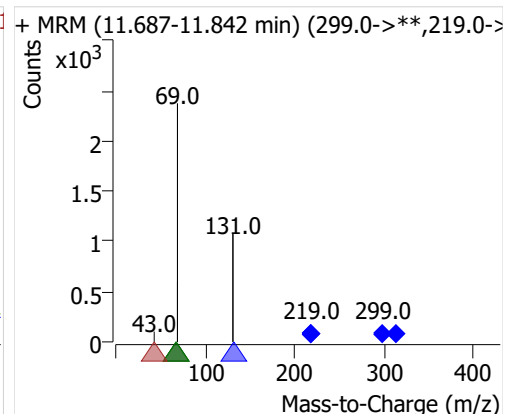
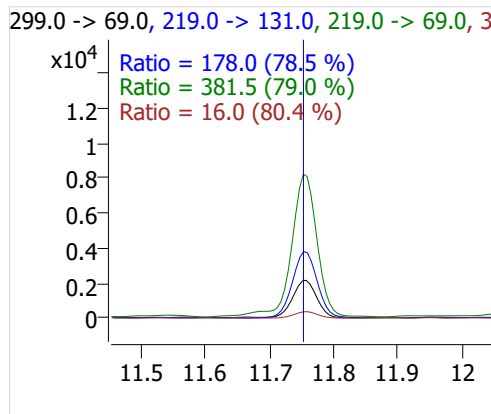
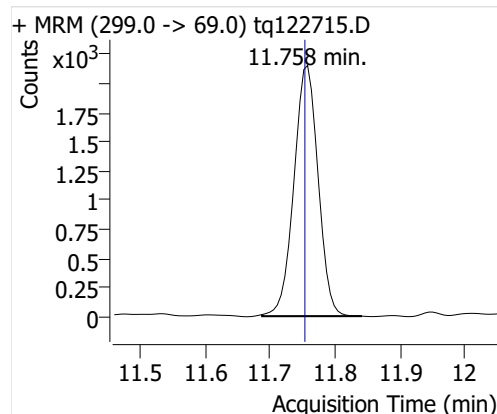
PFOA



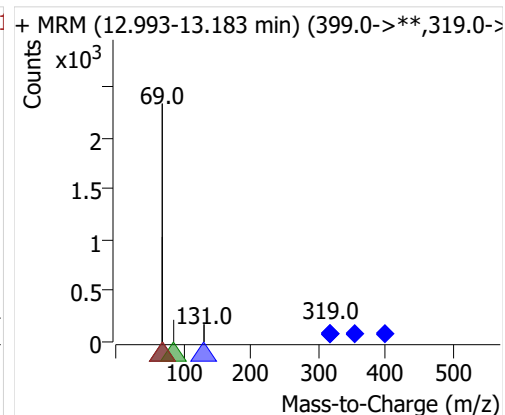
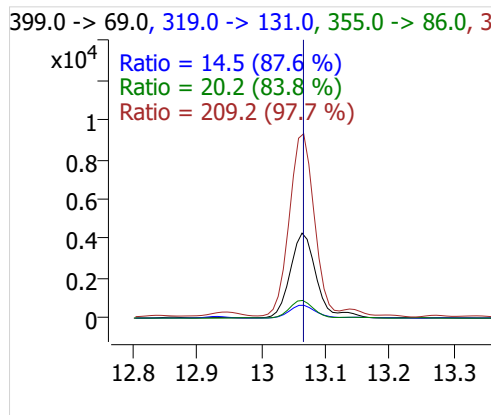
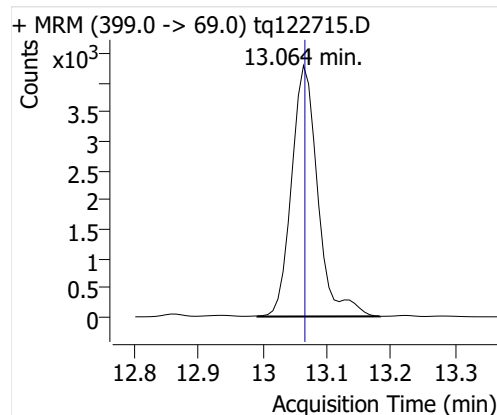
4:2 FTOH



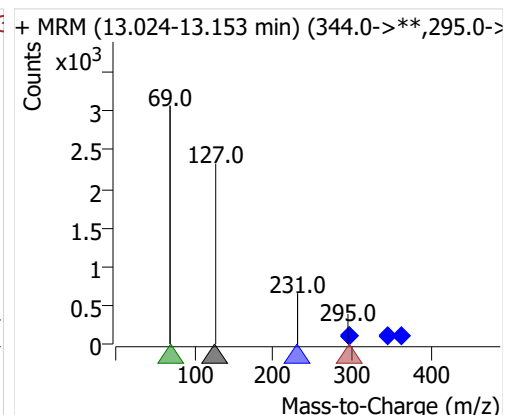
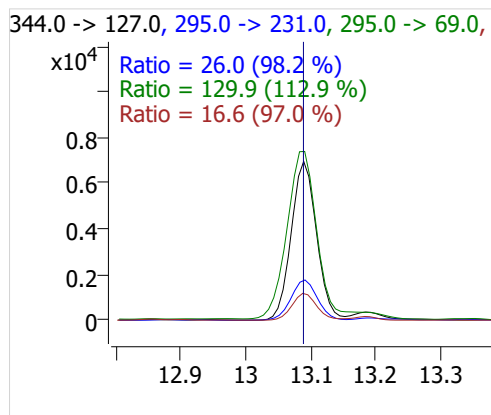
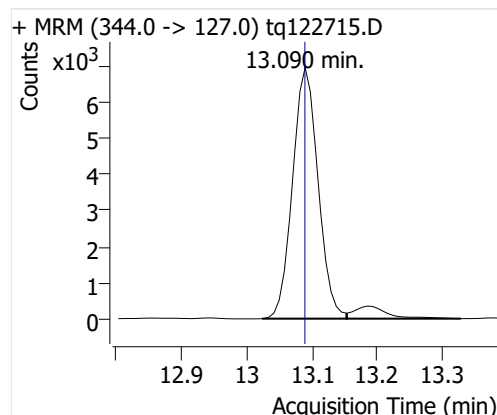
5:2sFTOH



7:2sFTOH

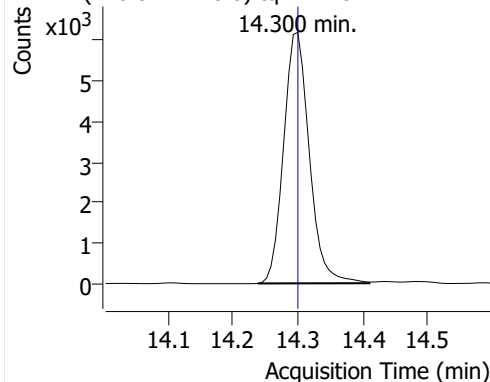


6:2 FTOH

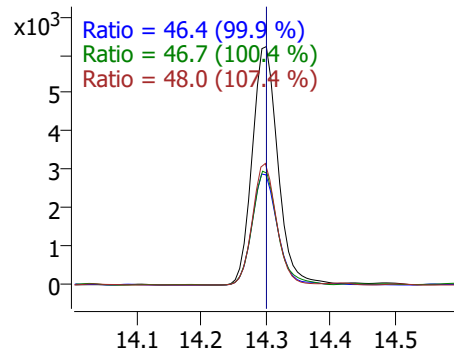


8:2 FTOH-C13

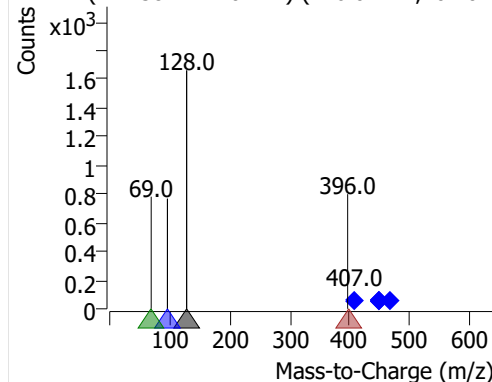
+ MRM (446.0 -> 128.0) tq122715.D



446.0 -> 128.0, 446.0 -> 96.0, 407.0 -> 69.0, 407.0 -> 396.0

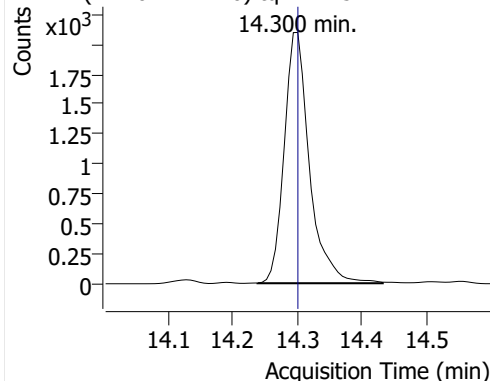


+ MRM (14.238-14.410 min) (446.0->**,407.0->**)

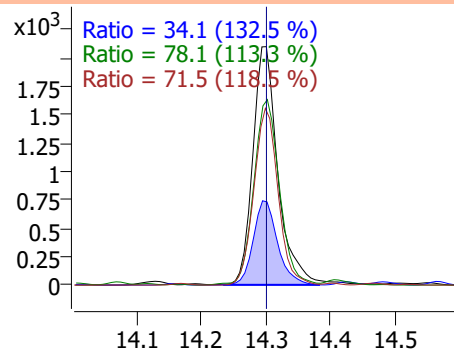


8:2 FTOH

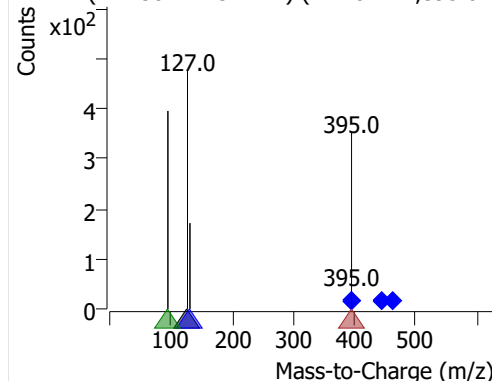
+ MRM (444.0 -> 127.0) tq122715.D



444.0 -> 127.0, 395.0 -> 131.0, 395.0 -> 95.0, 395.0 -> 395.0

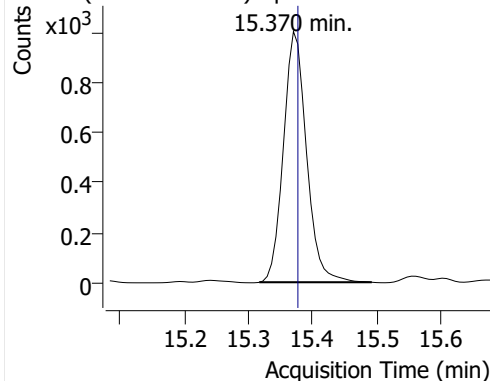


+ MRM (14.238-14.431 min) (444.0->**,395.0->**)

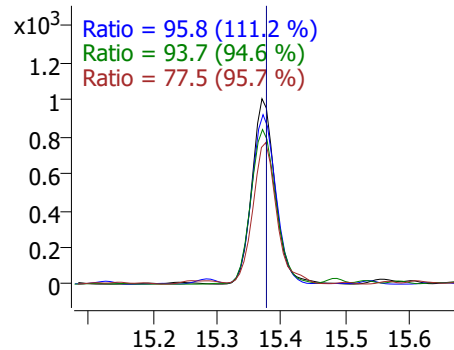


10:2 FTOH

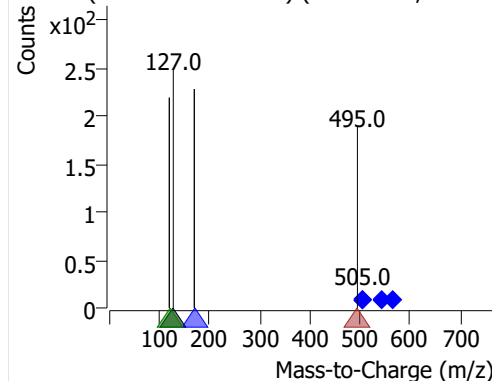
+ MRM (544.0 -> 127.0) tq122715.D



544.0 -> 127.0, 505.0 -> 169.0, 505.0 -> 119.0, 505.0 -> 495.0

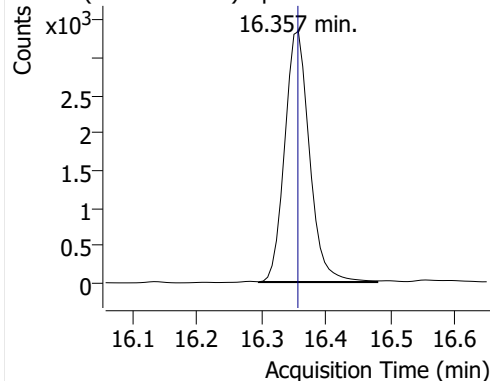


+ MRM (15.316-15.492 min) (544.0->**,505.0->**)

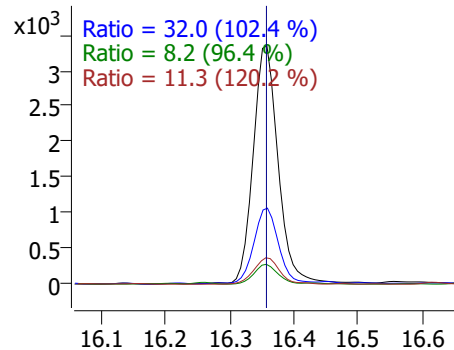


12:2 FTOH

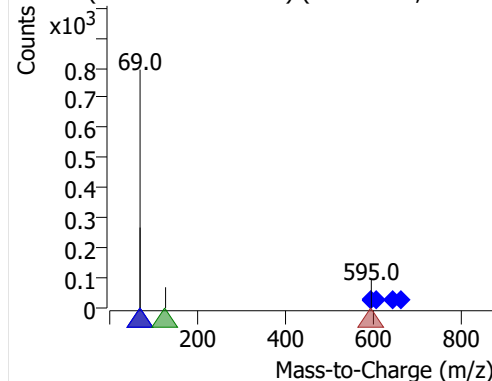
+ MRM (605.0 -> 69.0) tq122715.D



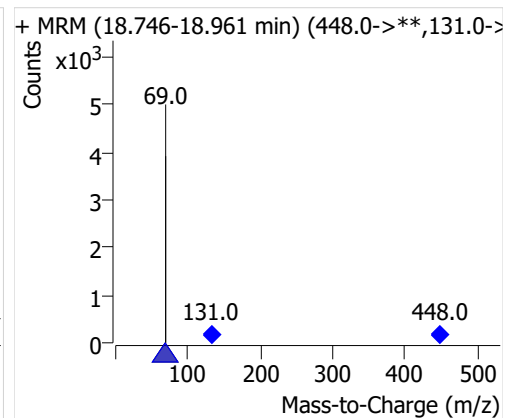
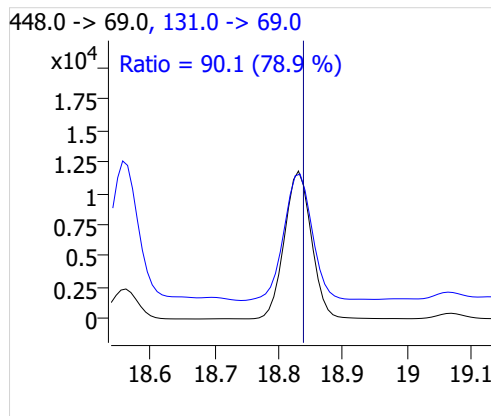
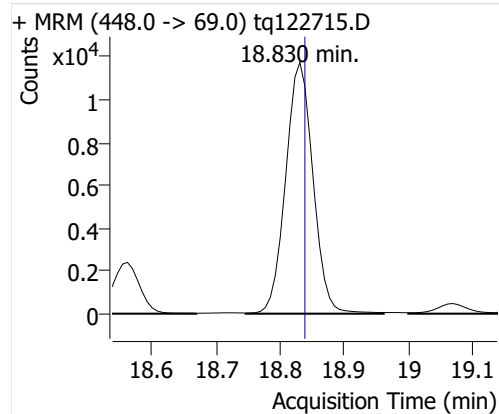
605.0 -> 69.0, 595.0 -> 69.0, 644.0 -> 127.0, 644.0 -> 595.0



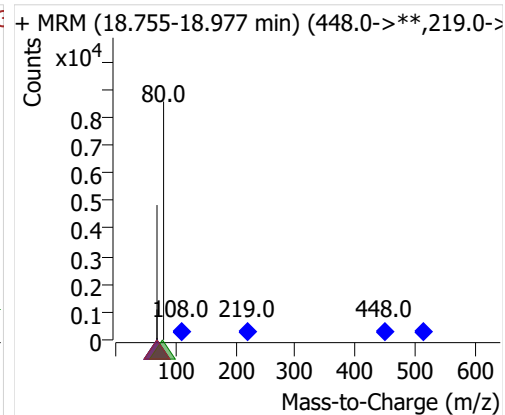
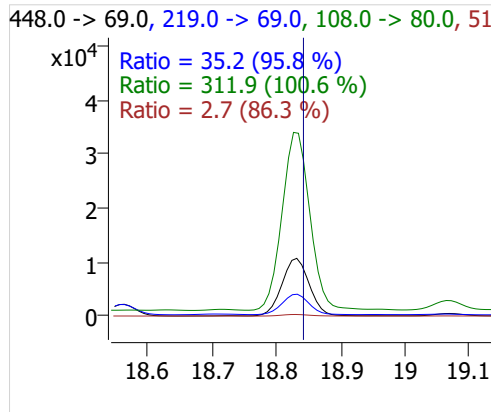
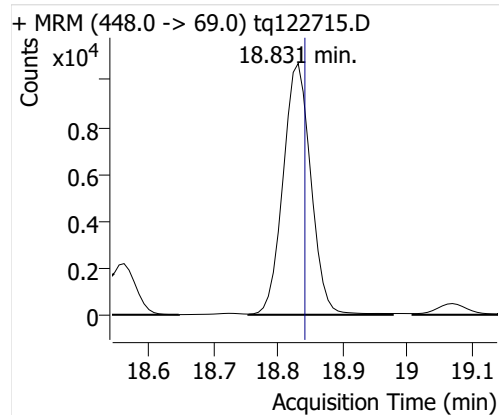
+ MRM (16.296-16.480 min) (605.0->**,595.0->**)



NMeFOSA



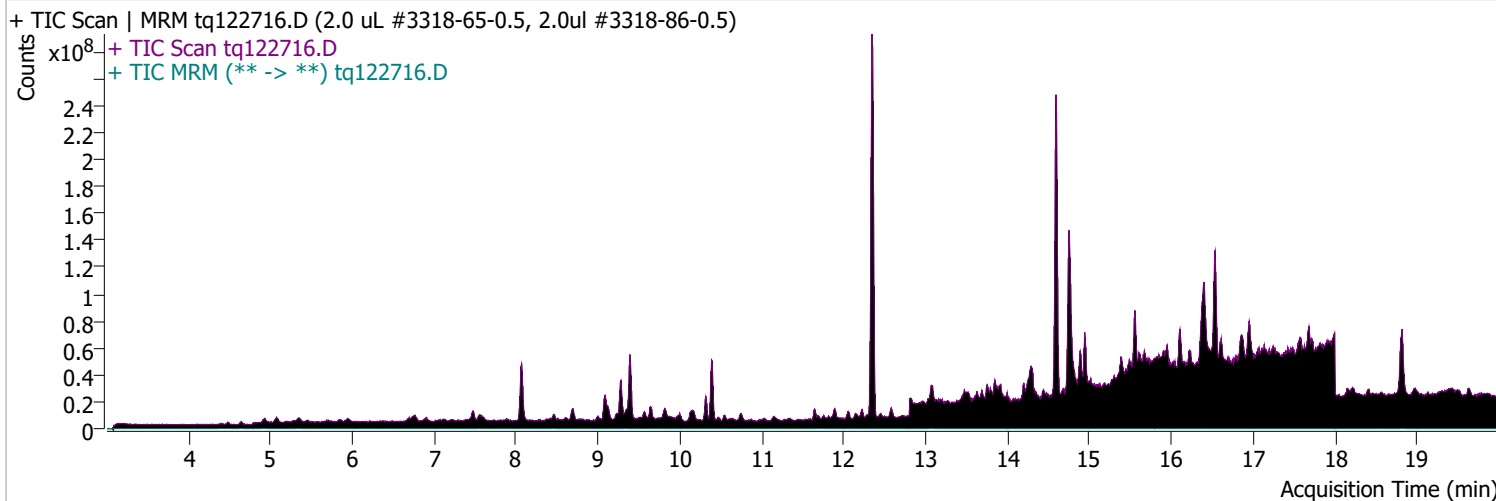
NEtFOSA



Quantitative Analysis Sample Report

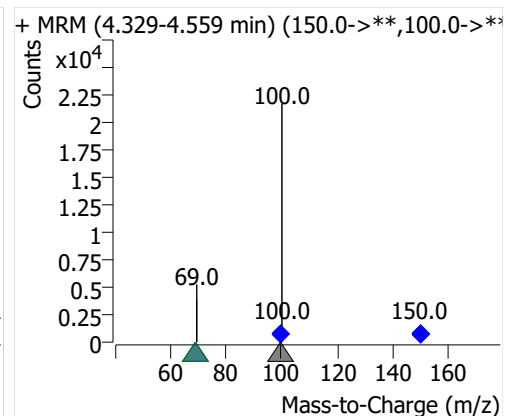
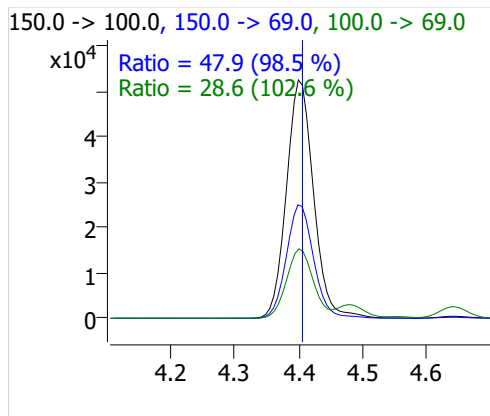
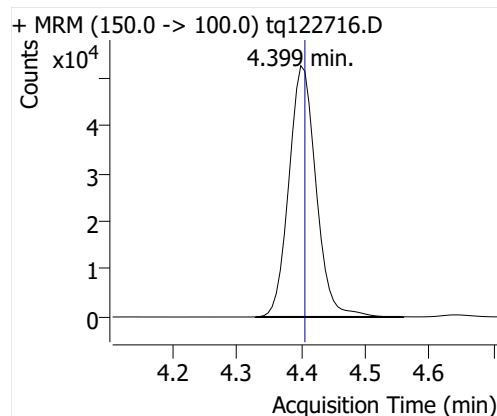
Batch Path D:\MassHunter\GCMS\1\data\27dec22a\QuantResults\tq22m1227a.batch.bin
Analysis Time 1/3/2023 2:39 PM **Analyst Name** TAI\us32_usr_ins22923
Report Time 1/5/2023 3:16:29 PM **Reporter Name** TAI\us32_usr_ins22923
Last Calib Update 1/3/2023 2:39 PM **Batch State** Processed
Quant Batch Version 10.1 **Quant Report Version** 10.1
Acq. Time 12/27/2022 3:22 PM **Data File** tq122716.D
Sample Type Cal **Sample Name** 2.0 uL #3318-65-0.5, 2.0ul #3318-86-0.5
Dilution 1 **Acq. Method** tq22m1209

Sample Chromatogram

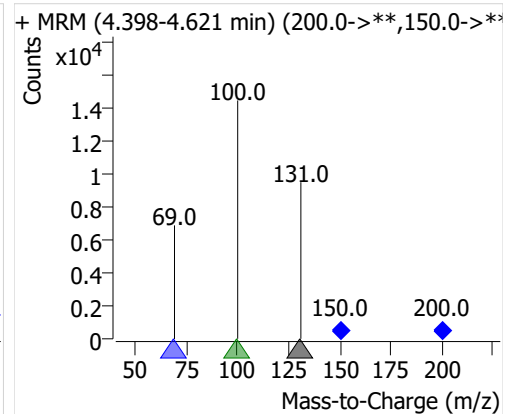
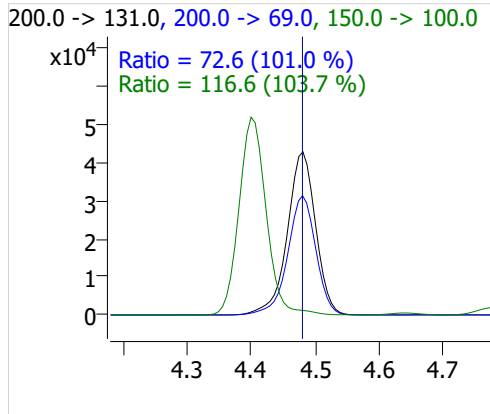
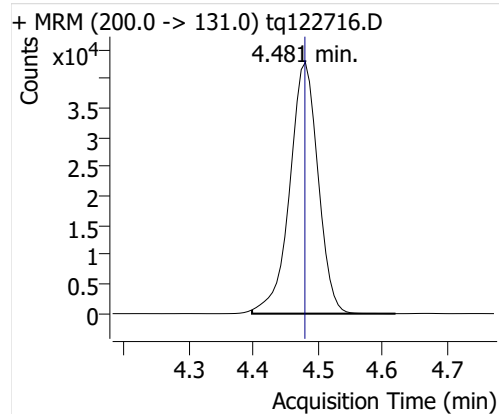


Compound	ISTD	RT	Resp.	ISTD Resp.	Resp. Ratio	Final Conc	Units
PFBA	6:2 FTOH-C13	4.399	154851	43259	3.5797	1.0682	ng
PFPeA	6:2 FTOH-C13	4.481	130674	43259	3.0208	1.0161	ng
PFHxA	6:2 FTOH-C13	4.639	60938	43259	1.4087	1.0176	ng
PFHpA	6:2 FTOH-C13	4.920	41901	43259	0.9686	1.0260	ng
PFOA	6:2 FTOH-C13	5.348	25669	43259	0.5934	0.9832	ng
4:2 FTOH	6:2 FTOH-C13	11.688	21001	43259	0.4855	1.0316	ng
5:2sFTOH	6:2 FTOH-C13	11.757	10101	43259	0.2335	0.9853	ng
7:2sFTOH	6:2 FTOH-C13	13.064	22744	43259	0.5258	1.0237	ng
6:2 FTOH	6:2 FTOH-C13	13.090	38513	43259	0.8903	0.9723	ng
8:2 FTOH-C13	6:2 FTOH-C13	14.300	15950	43259	0.3687	0.9466	ng
8:2 FTOH	6:2 FTOH-C13	14.300	12471	43259	0.2883	1.1109	ng
10:2 FTOH	6:2 FTOH-C13	15.370	4585	43259	0.1060	0.9724	ng
12:2 FTOH	6:2 FTOH-C13	16.357	17616	43259	0.4072	0.9739	ng
NMeFOSA	6:2 FTOH-C13	18.830	75613	43259	1.7479	1.0976	ng
NEtFOSA	6:2 FTOH-C13	18.831	68639	43259	1.5867	1.1008	ng

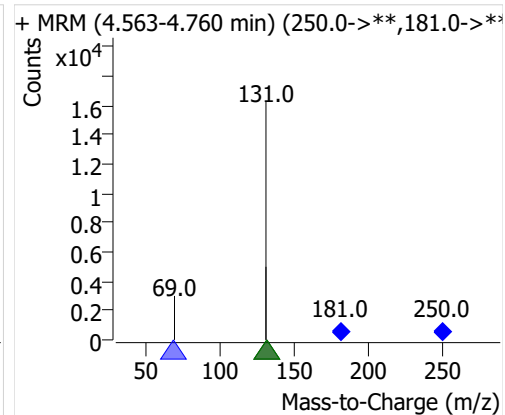
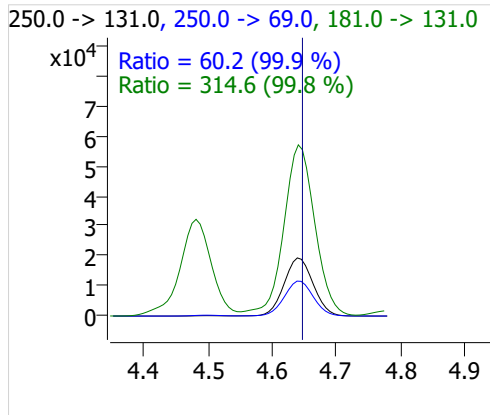
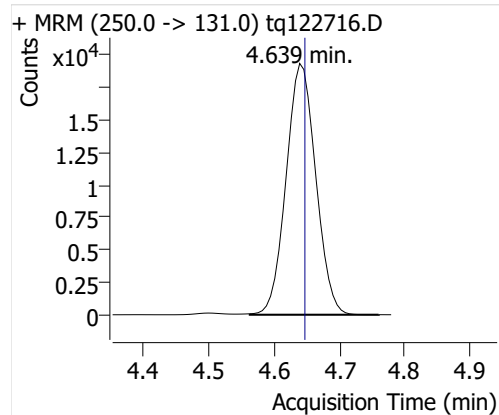
PFBA



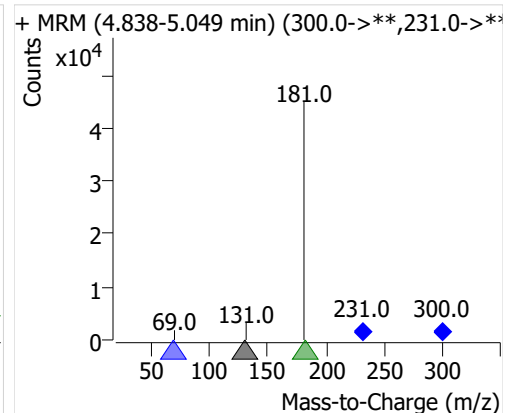
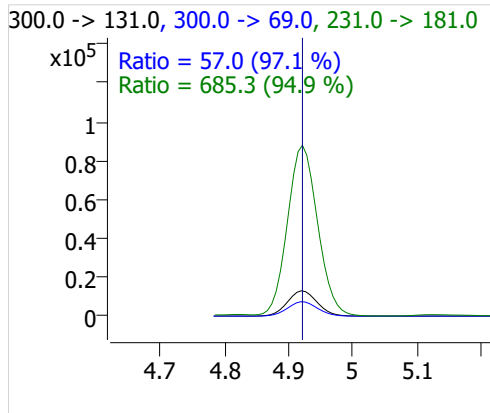
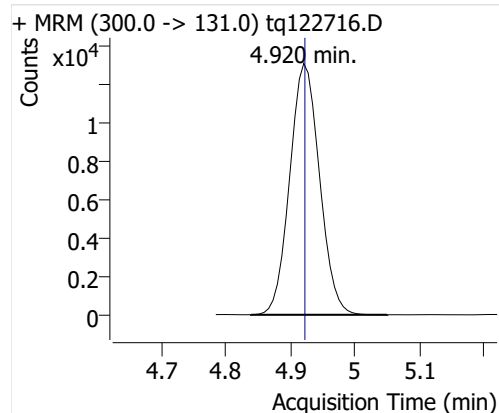
PFPeA



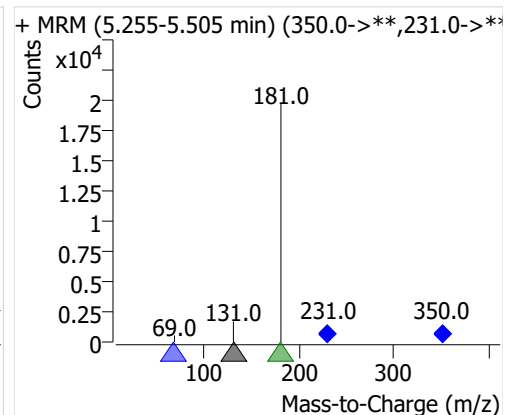
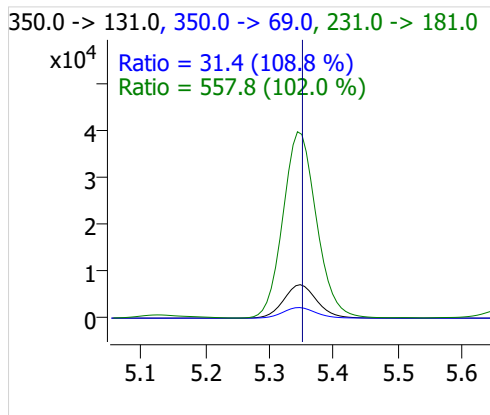
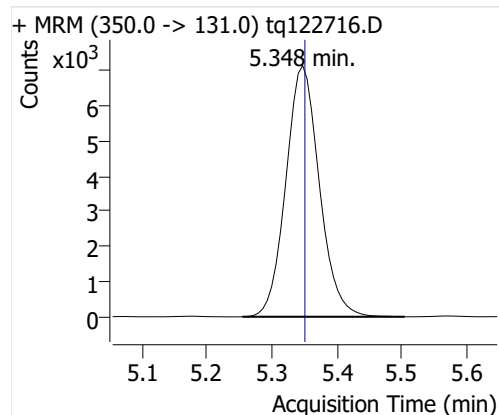
PFHxA



PFHpA

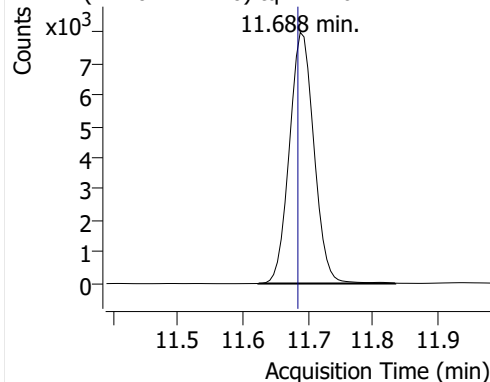


PFOA



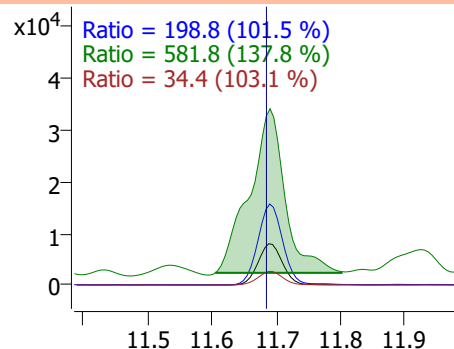
4:2 FTOH

+ MRM (244.0 -> 127.0) tq122716.D

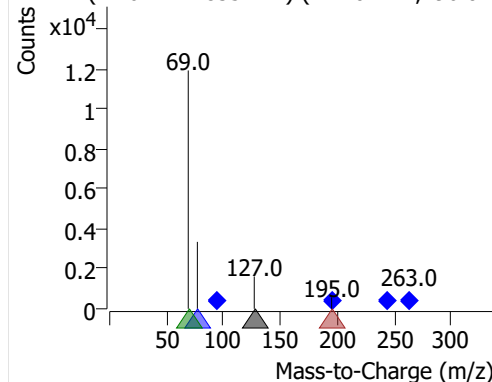


244.0 -> 127.0, 196.0 -> 77.0, 95.0 -> 69.0, 263.0 -> 127.0

Ratio = 198.8 (101.5 %)
Ratio = 581.8 (137.8 %)
Ratio = 34.4 (103.1 %)

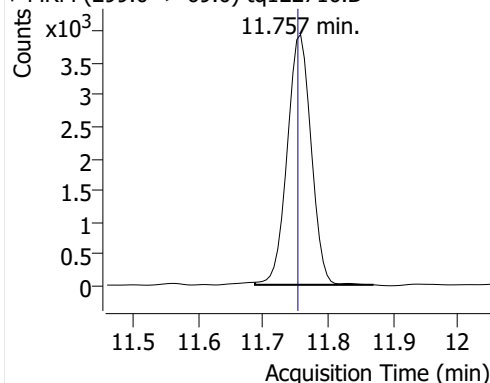


+ MRM (11.624-11.835 min) (244.0->**,196.0->*



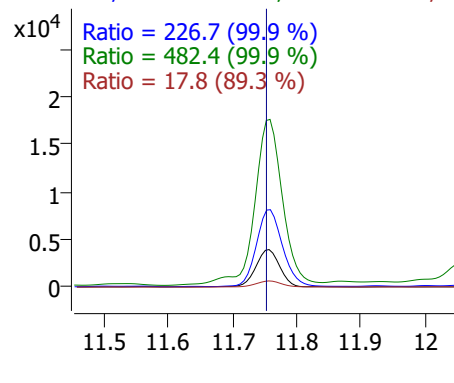
5:2sFTOH

+ MRM (299.0 -> 69.0) tq122716.D

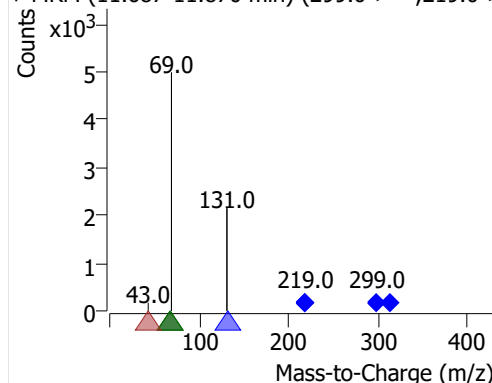


299.0 -> 69.0, 219.0 -> 131.0, 219.0 -> 69.0, 319.0 -> 131.0

Ratio = 226.7 (99.9 %)
Ratio = 482.4 (99.9 %)
Ratio = 17.8 (89.3 %)

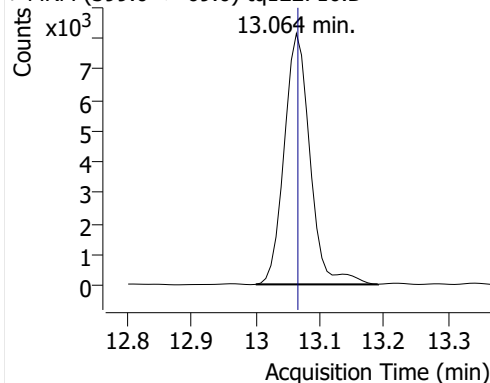


+ MRM (11.687-11.870 min) (299.0->**,219.0->*



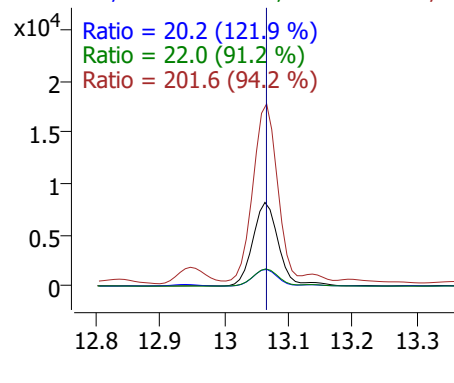
7:2sFTOH

+ MRM (399.0 -> 69.0) tq122716.D

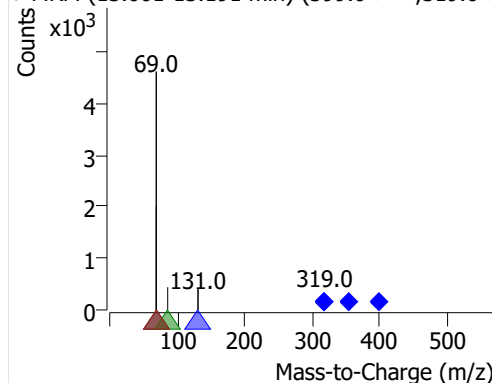


399.0 -> 69.0, 319.0 -> 131.0, 355.0 -> 86.0, 319.0 -> 69.0

Ratio = 20.2 (121.9 %)
Ratio = 22.0 (91.2 %)
Ratio = 201.6 (94.2 %)

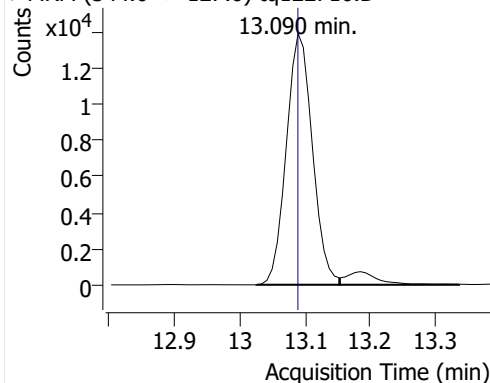


+ MRM (13.001-13.191 min) (399.0->**,319.0->*



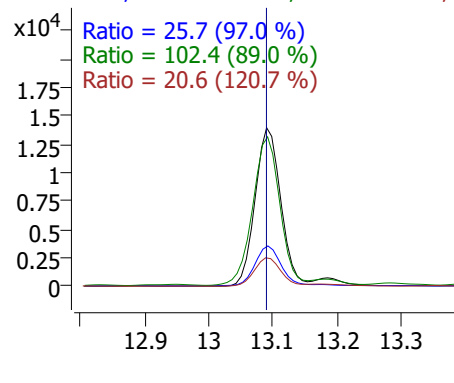
6:2 FTOH

+ MRM (344.0 -> 127.0) tq122716.D

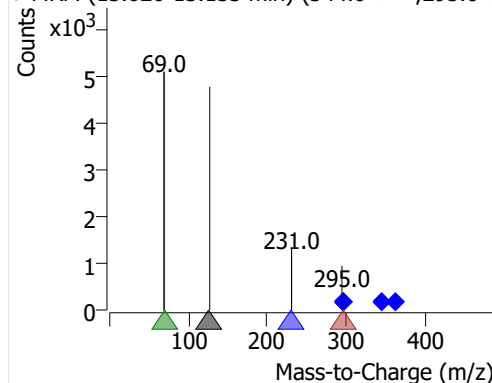


344.0 -> 127.0, 295.0 -> 231.0, 295.0 -> 69.0, 319.0 -> 131.0

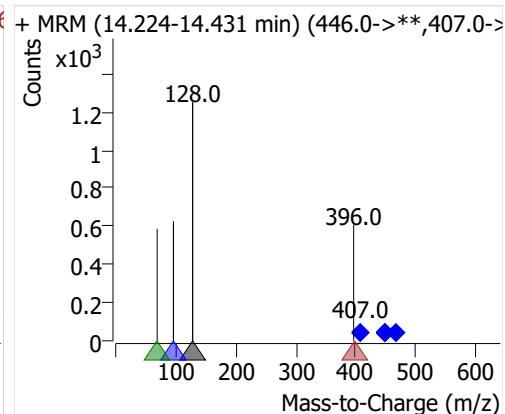
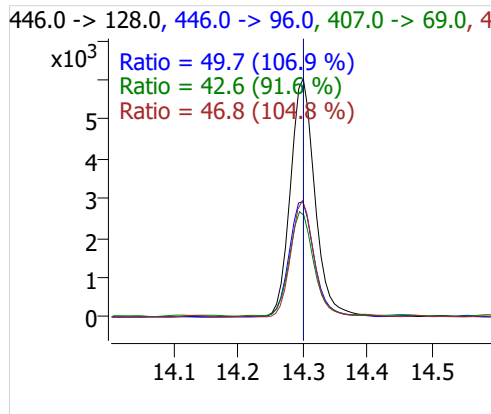
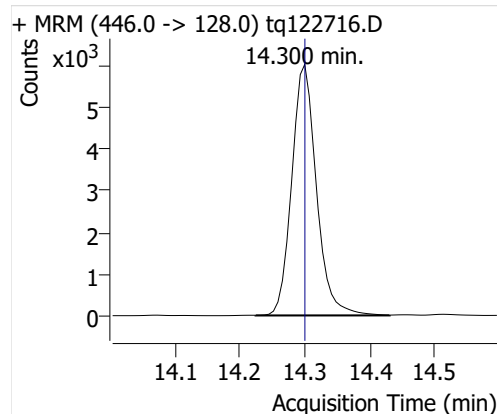
Ratio = 25.7 (97.0 %)
Ratio = 102.4 (89.0 %)
Ratio = 20.6 (120.7 %)



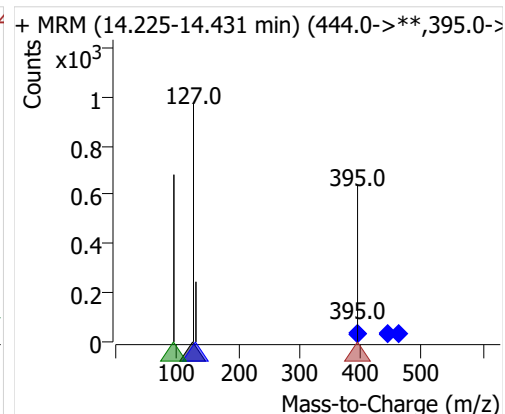
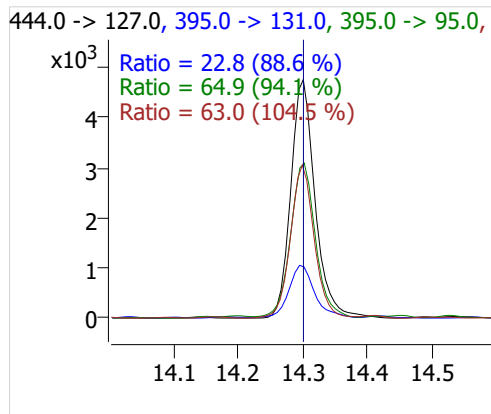
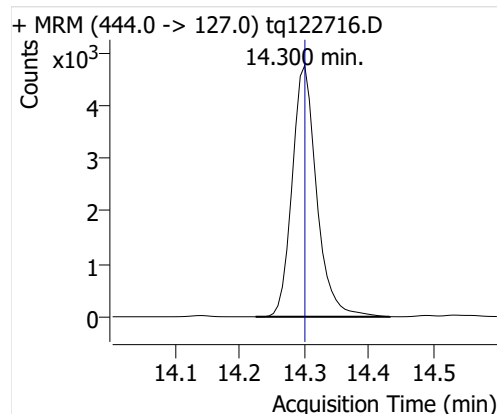
+ MRM (13.026-13.153 min) (344.0->**,295.0->*



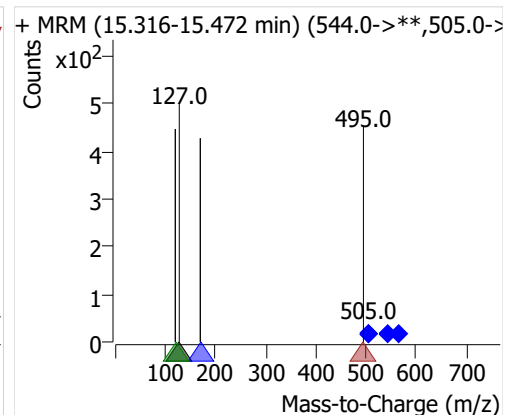
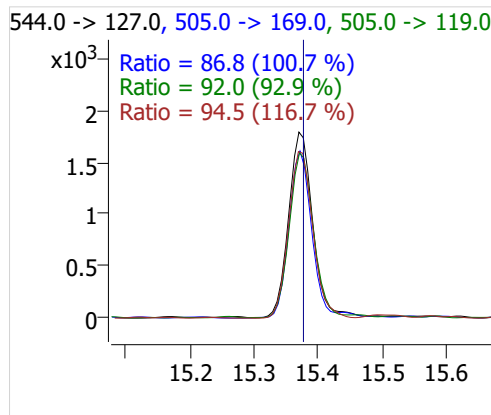
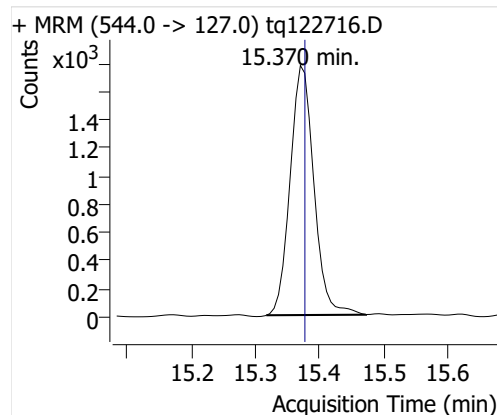
8:2 FTOH-C13



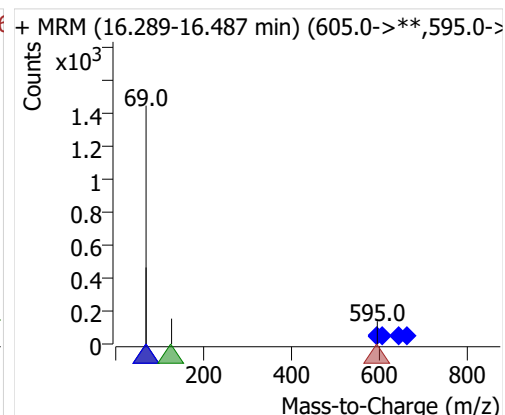
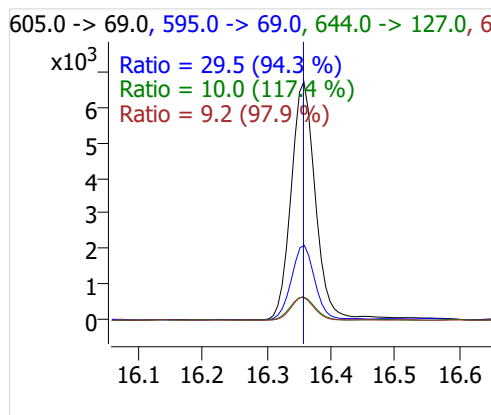
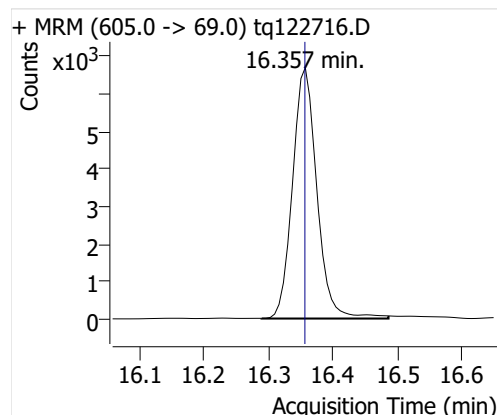
8:2 FTOH



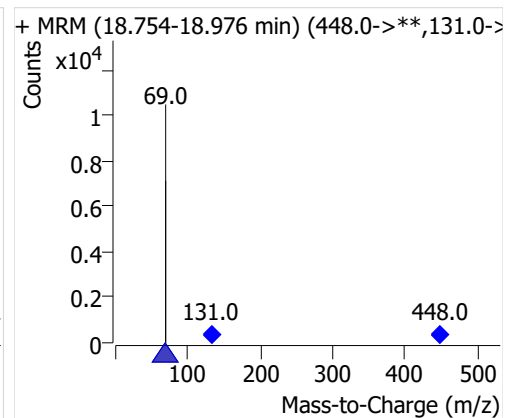
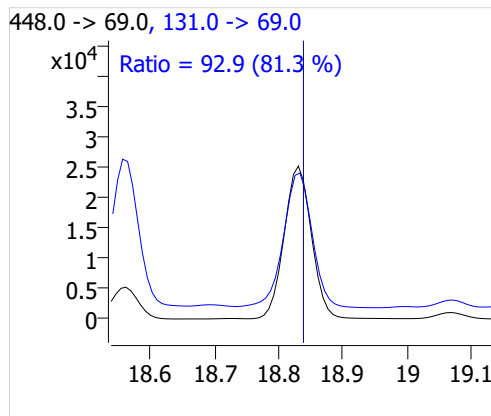
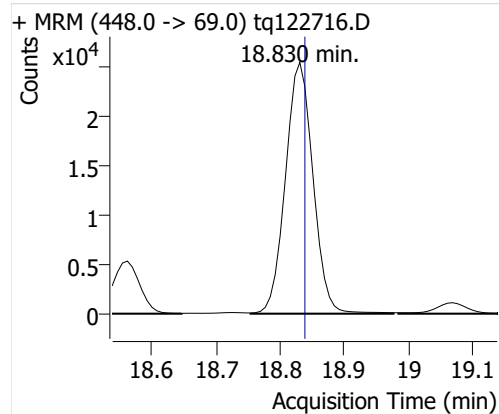
10:2 FTOH



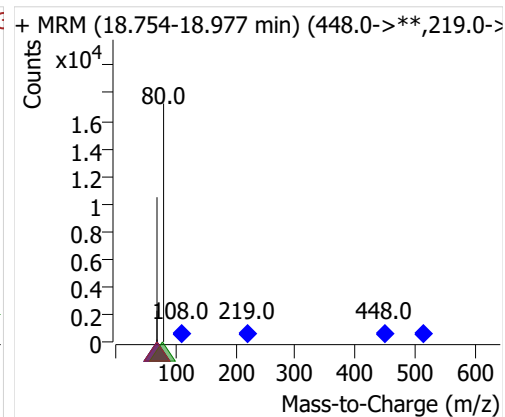
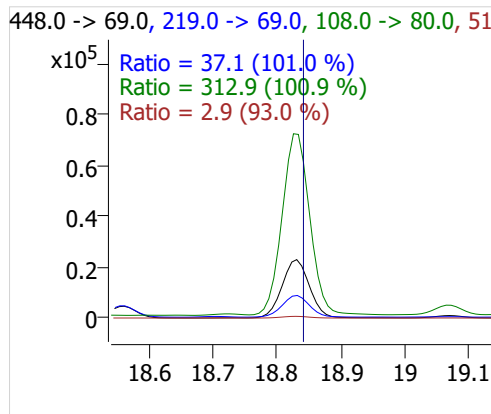
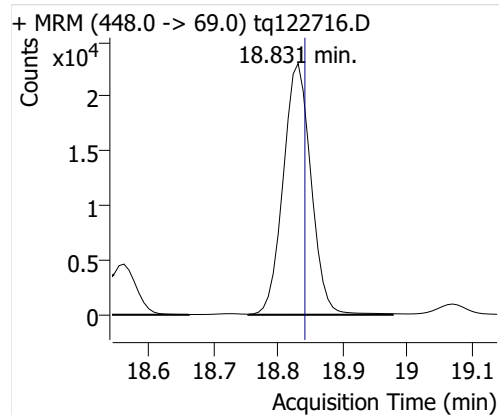
12:2 FTOH



NMeFOSA



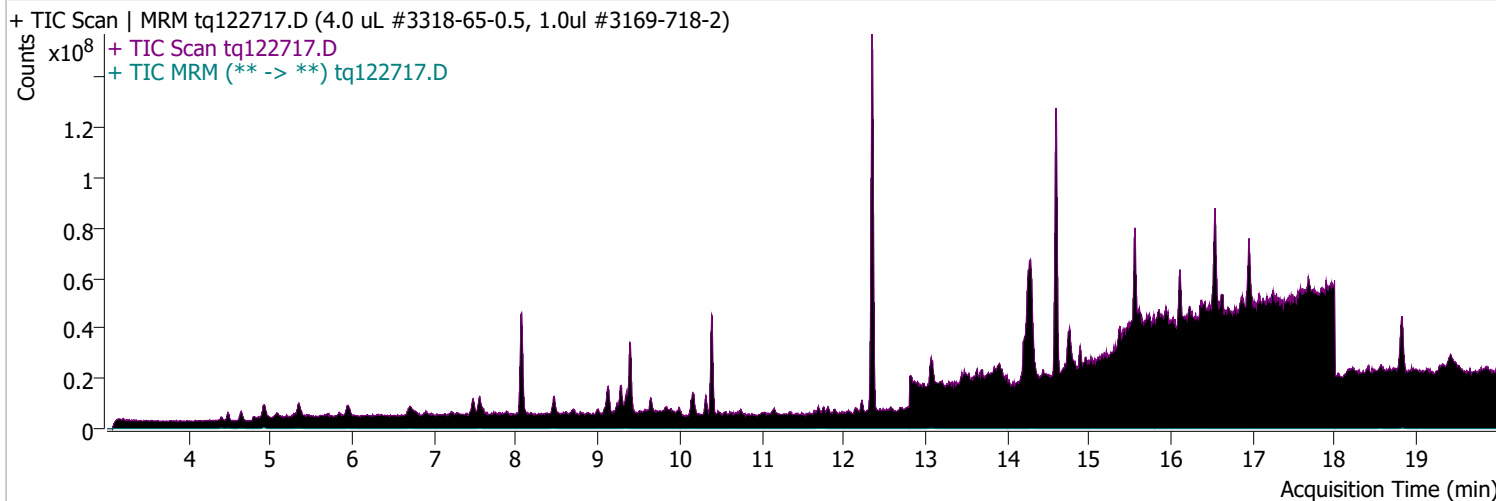
NEtFOSA



Quantitative Analysis Sample Report

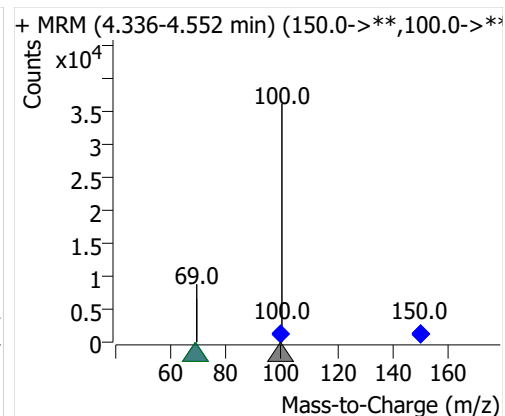
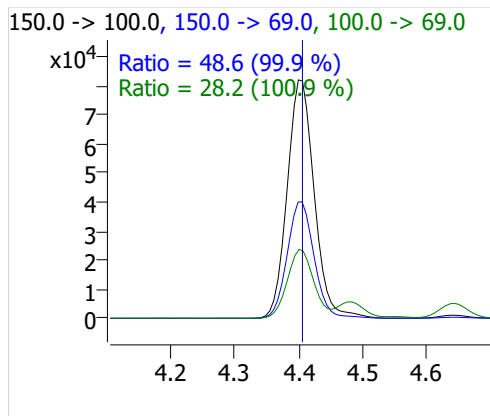
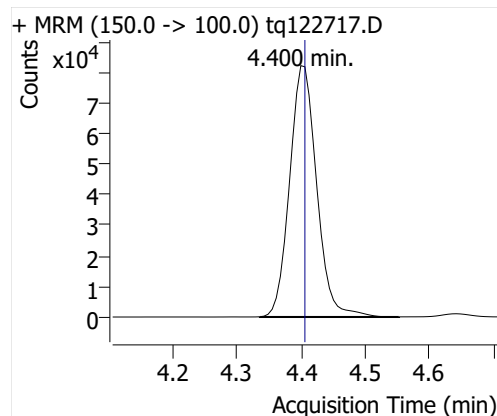
Batch Path D:\MassHunter\GCMS\1\data\27dec22a\QuantResults\tq22m1227a.batch.bin
 Analysis Time 1/3/2023 2:39 PM Analyst Name TAI\us32_usr_ins22923
 Report Time 1/5/2023 3:16:31 PM Reporter Name TAI\us32_usr_ins22923
 Last Calib Update 1/3/2023 2:39 PM Batch State Processed
 Quant Batch Version 10.1 Quant Report Version 10.1
 Acq. Time 12/27/2022 3:46 PM Data File tq122717.D
 Sample Type Cal Sample Name 4.0 uL #3318-65-0.5, 1.0uL #3169-718-2
 Dilution 1 Acq. Method tq22m1209

Sample Chromatogram

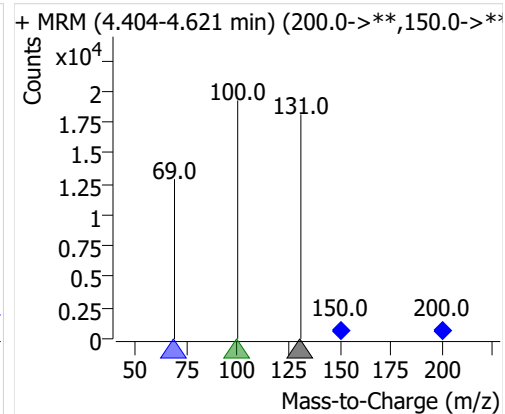
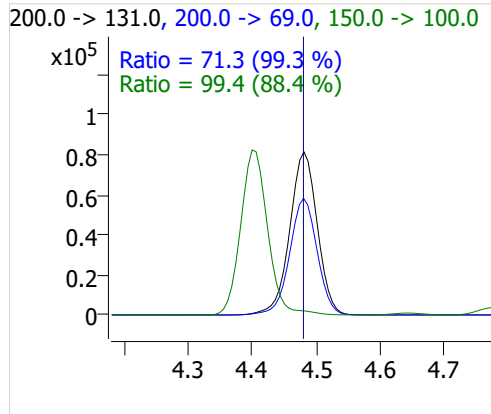
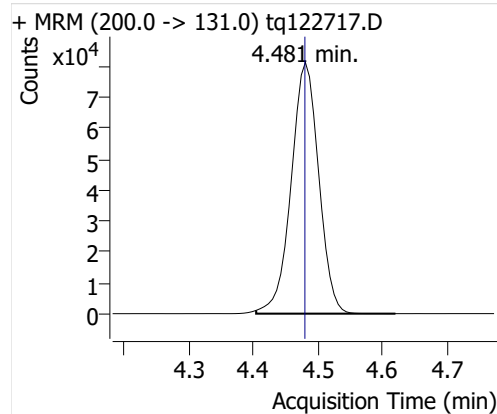


Compound	ISTD	RT	Resp.	ISTD Resp.	Resp. Ratio	Final Conc	Units
PFBA	6:2 FTOH-C13	4.400	240611	41650	5.7770	1.7240	ng
PFPeA	6:2 FTOH-C13	4.481	242140	41650	5.8137	1.9555	ng
PFHxA	6:2 FTOH-C13	4.639	114071	41650	2.7388	1.9784	ng
PFHpA	6:2 FTOH-C13	4.920	76190	41650	1.8293	1.9377	ng
PFOA	6:2 FTOH-C13	5.348	48366	41650	1.1613	1.9241	ng
4:2 FTOH	6:2 FTOH-C13	11.688	37655	41650	0.9041	1.9210	ng
5:2sFTOH	6:2 FTOH-C13	11.758	19380	41650	0.4653	1.9635	ng
7:2sFTOH	6:2 FTOH-C13	13.064	42057	41650	1.0098	1.9660	ng
6:2 FTOH	6:2 FTOH-C13	13.090	69264	41650	1.6630	1.8162	ng
8:2 FTOH-C13	6:2 FTOH-C13	14.300	15289	41650	0.3671	0.9424	ng
8:2 FTOH	6:2 FTOH-C13	14.301	20639	41650	0.4955	1.9095	ng
10:2 FTOH	6:2 FTOH-C13	15.370	7730	41650	0.1856	1.7027	ng
12:2 FTOH	6:2 FTOH-C13	16.356	29122	41650	0.6992	1.6722	ng
NMeFOSA	6:2 FTOH-C13	18.830	118065	41650	2.8347	1.7801	ng
NEtFOSA	6:2 FTOH-C13	18.831	106589	41650	2.5592	1.7754	ng

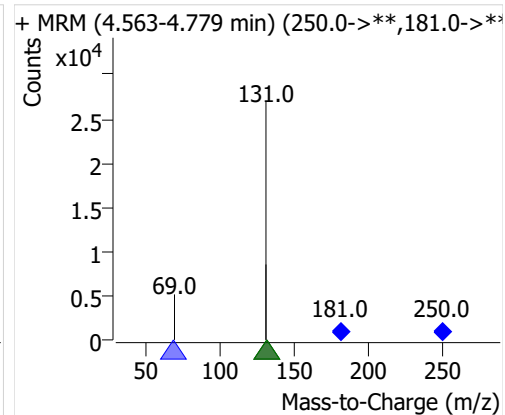
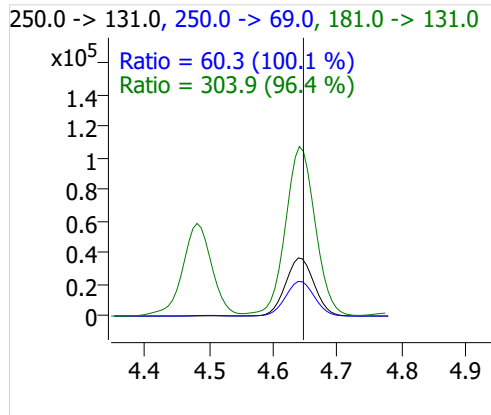
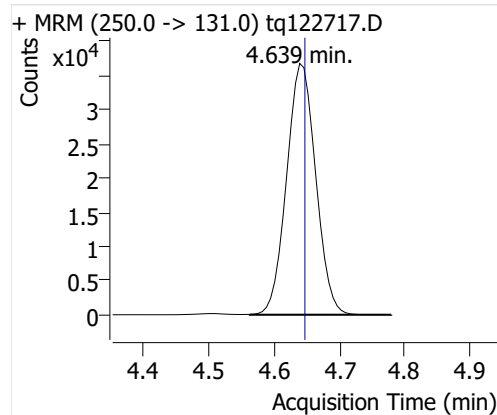
PFBA



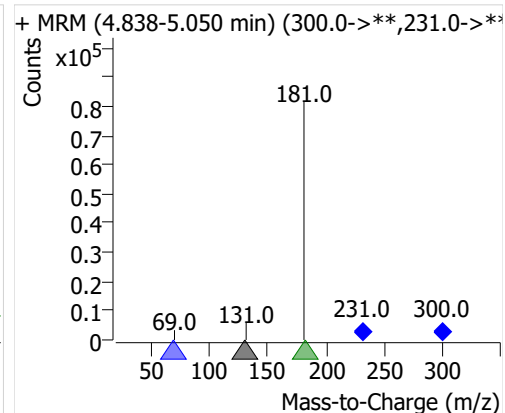
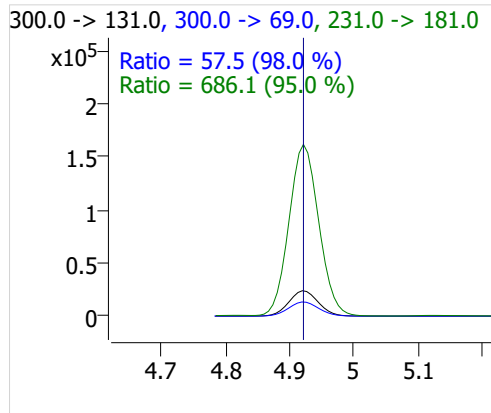
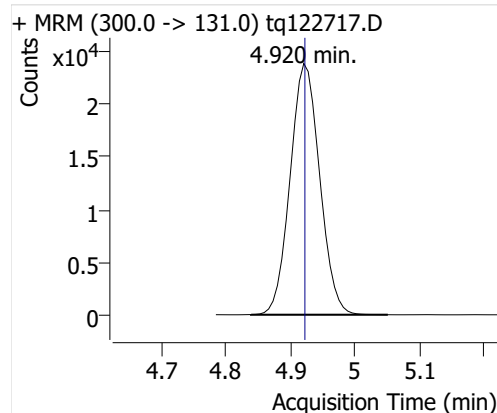
PFPeA



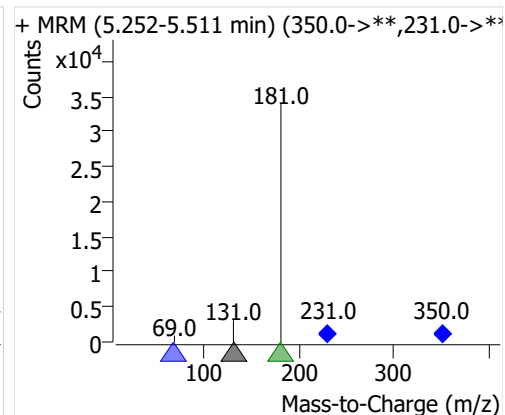
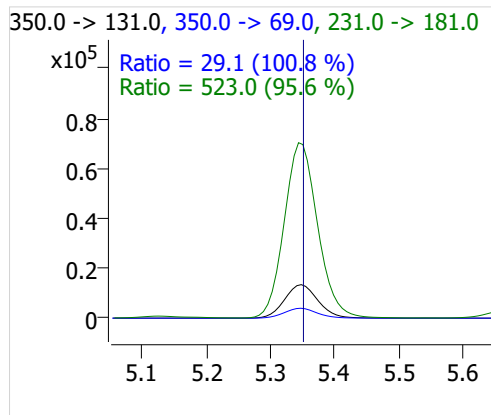
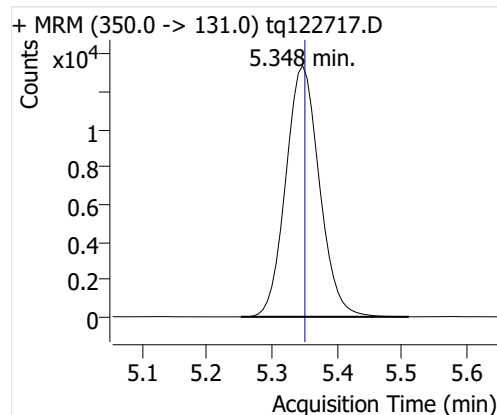
PFHxA



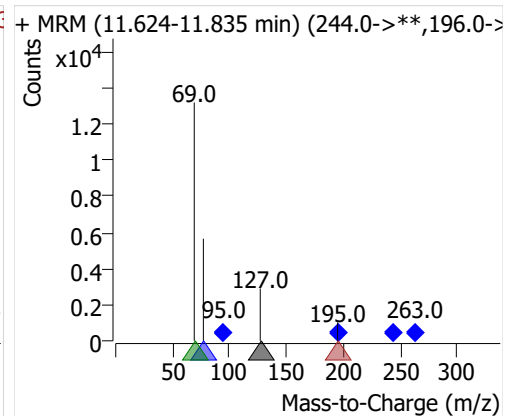
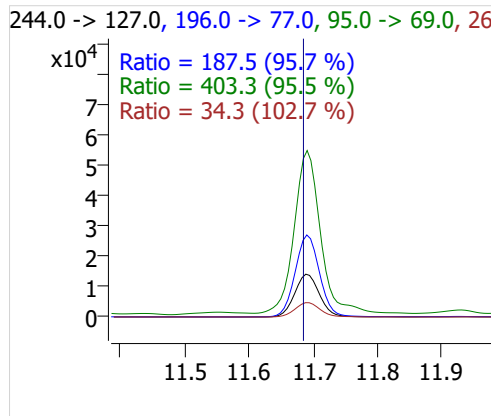
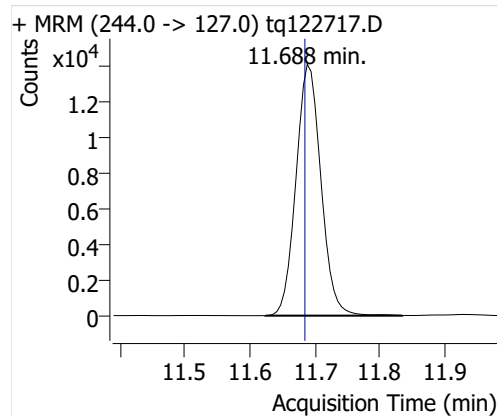
PFHpA



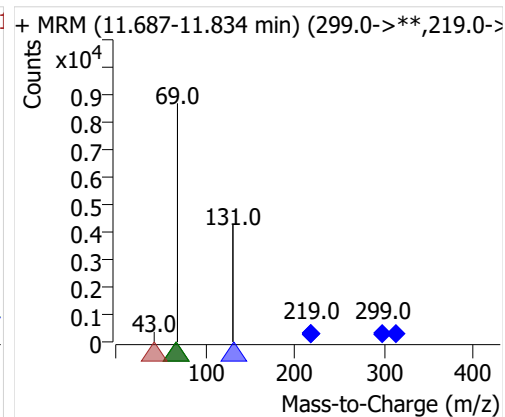
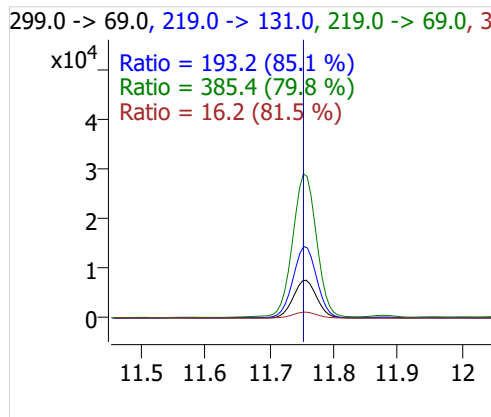
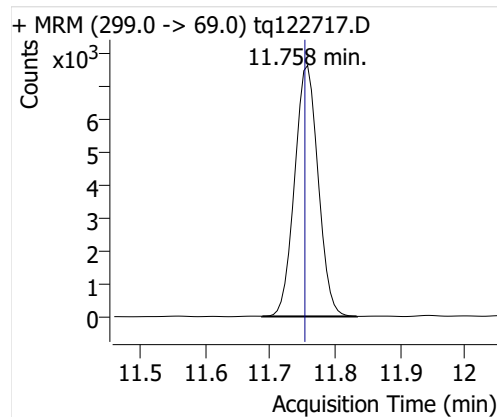
PFOA



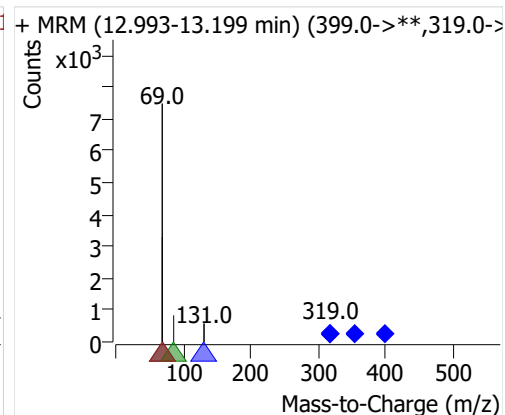
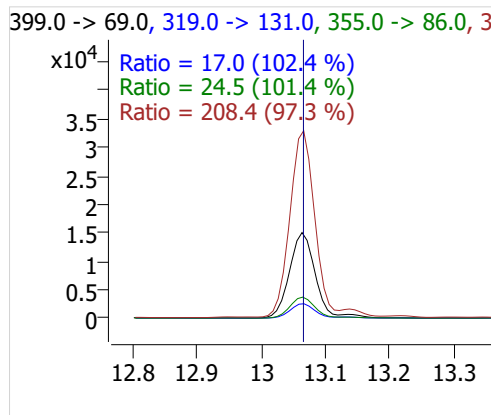
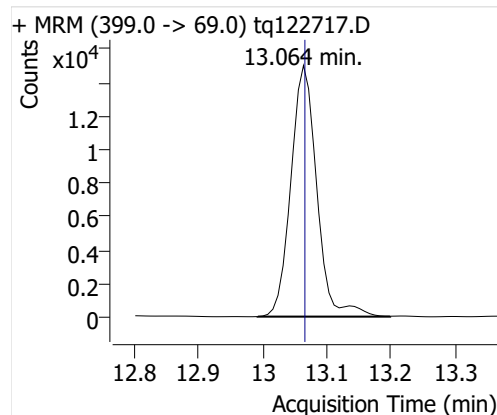
4:2 FTOH



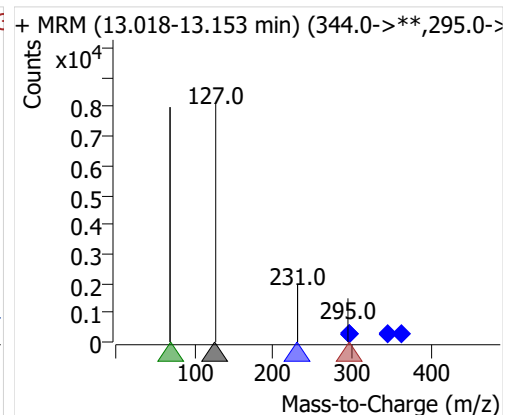
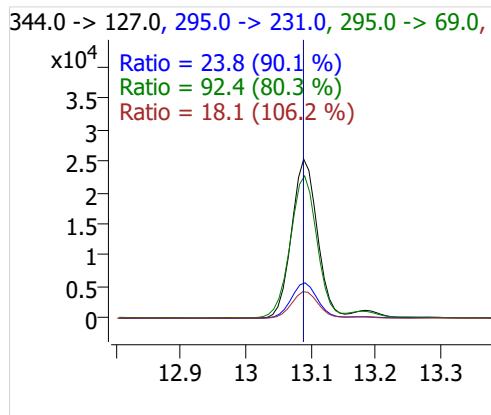
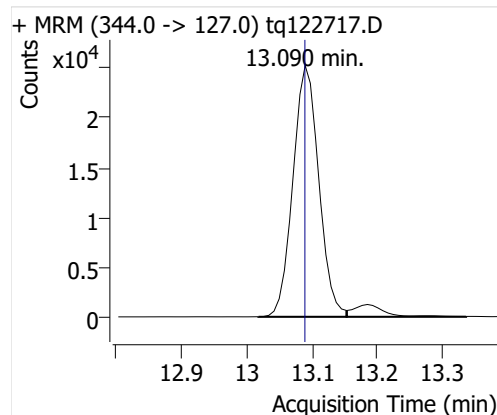
5:2sFTOH



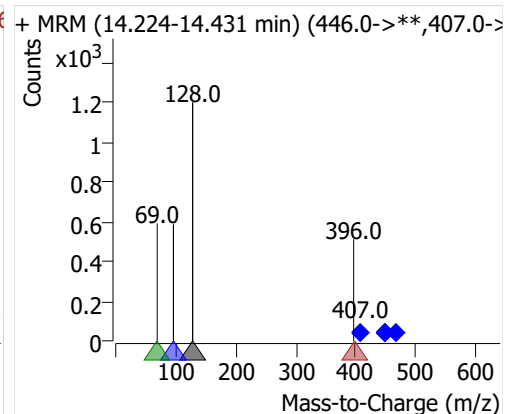
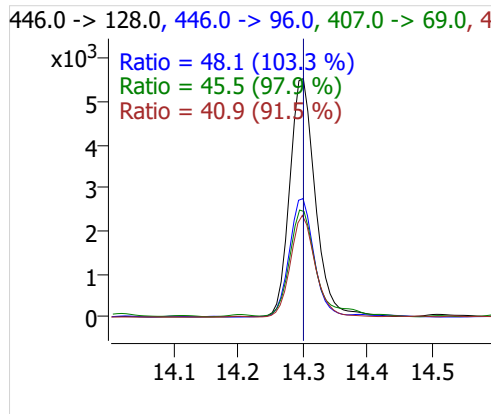
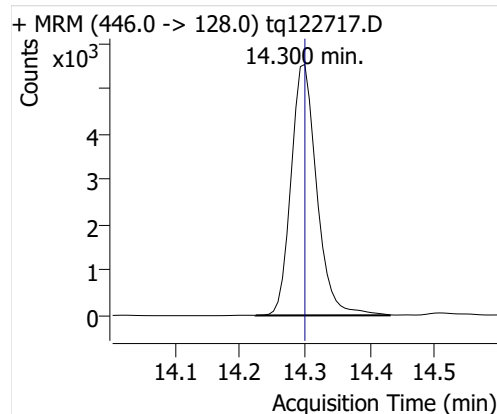
7:2sFTOH



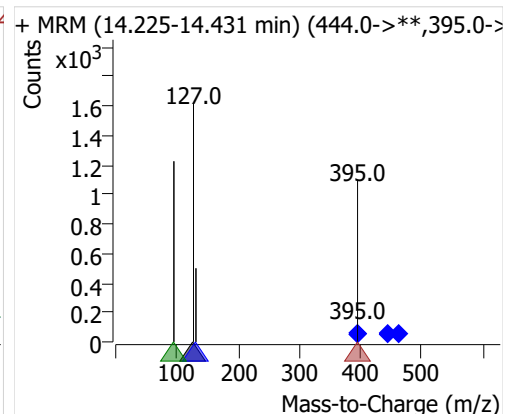
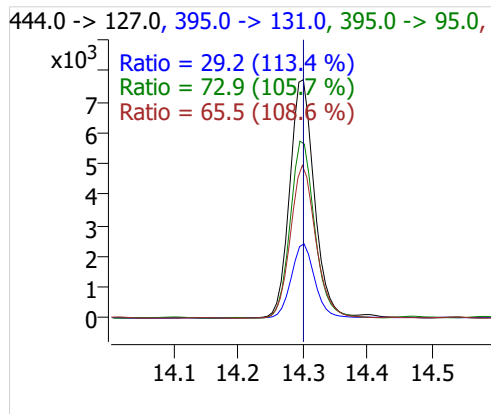
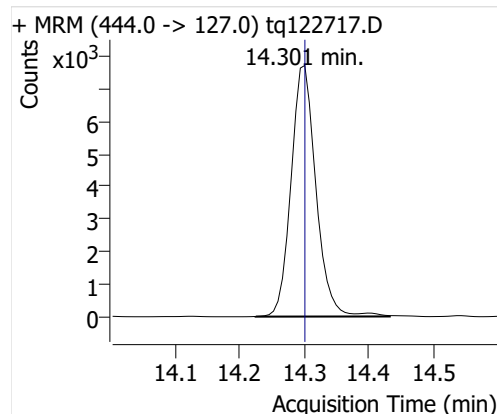
6:2 FTOH



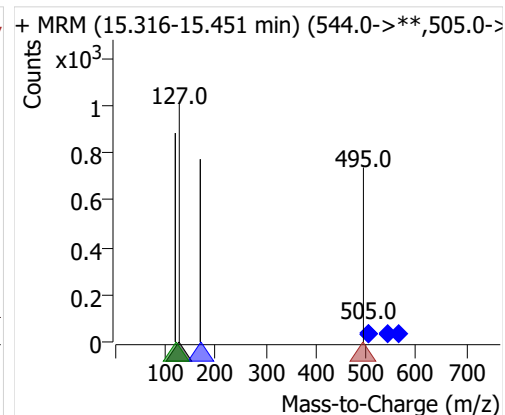
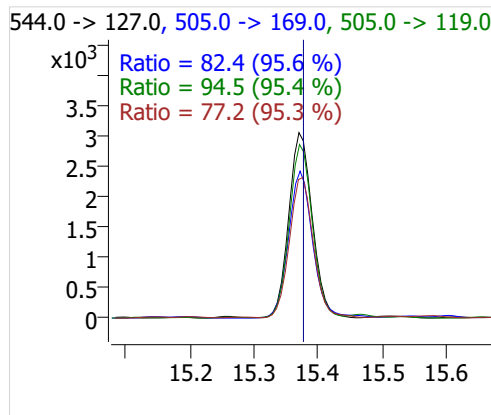
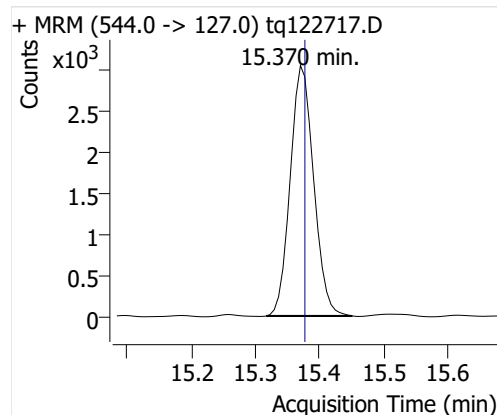
8:2 FTOH-C13



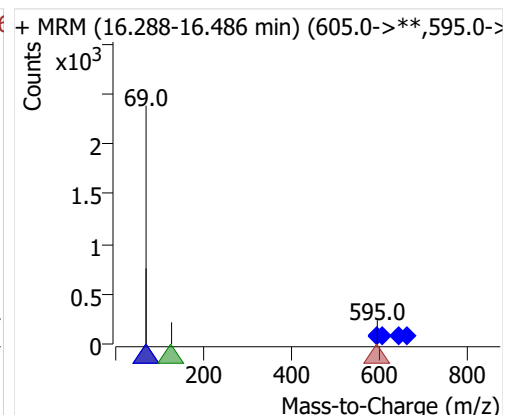
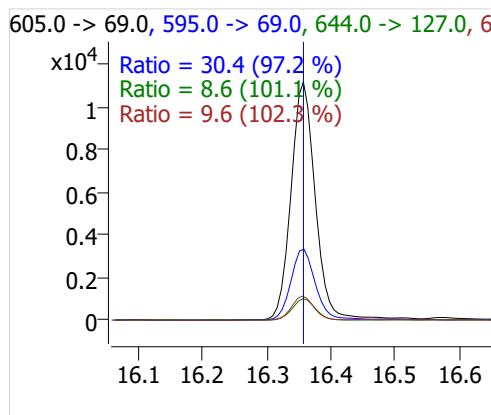
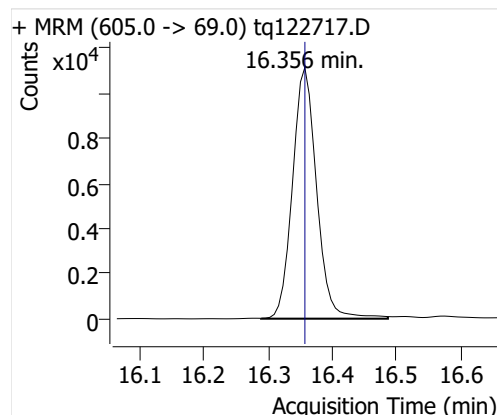
8:2 FTOH



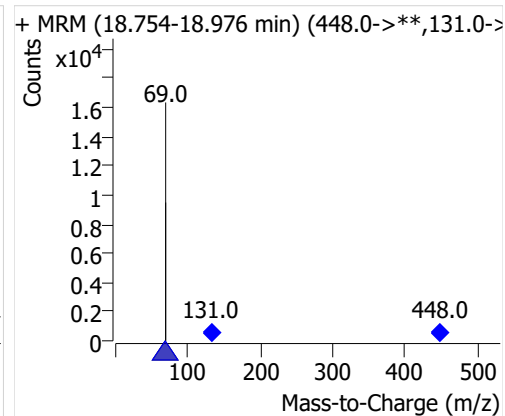
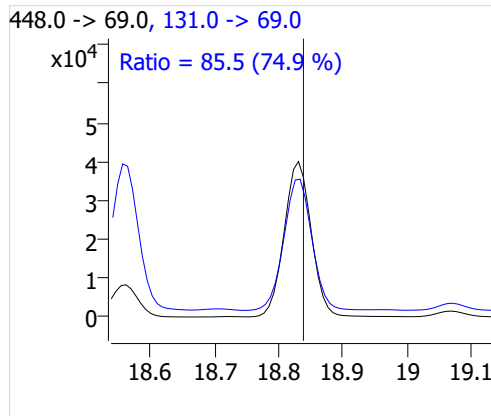
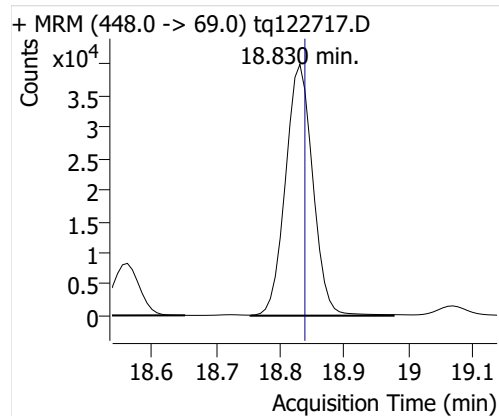
10:2 FTOH



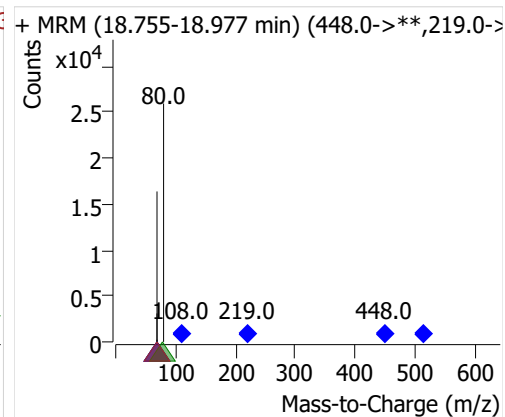
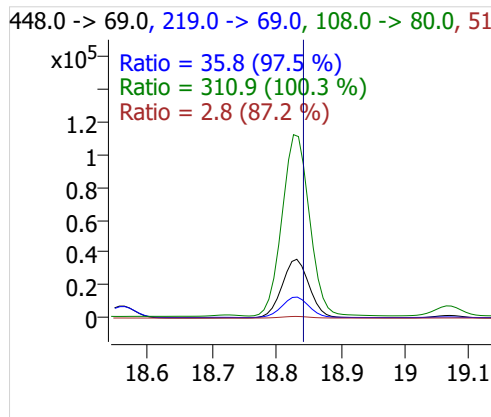
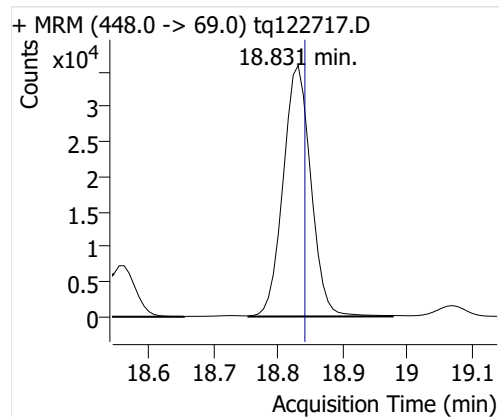
12:2 FTOH



NMeFOSA



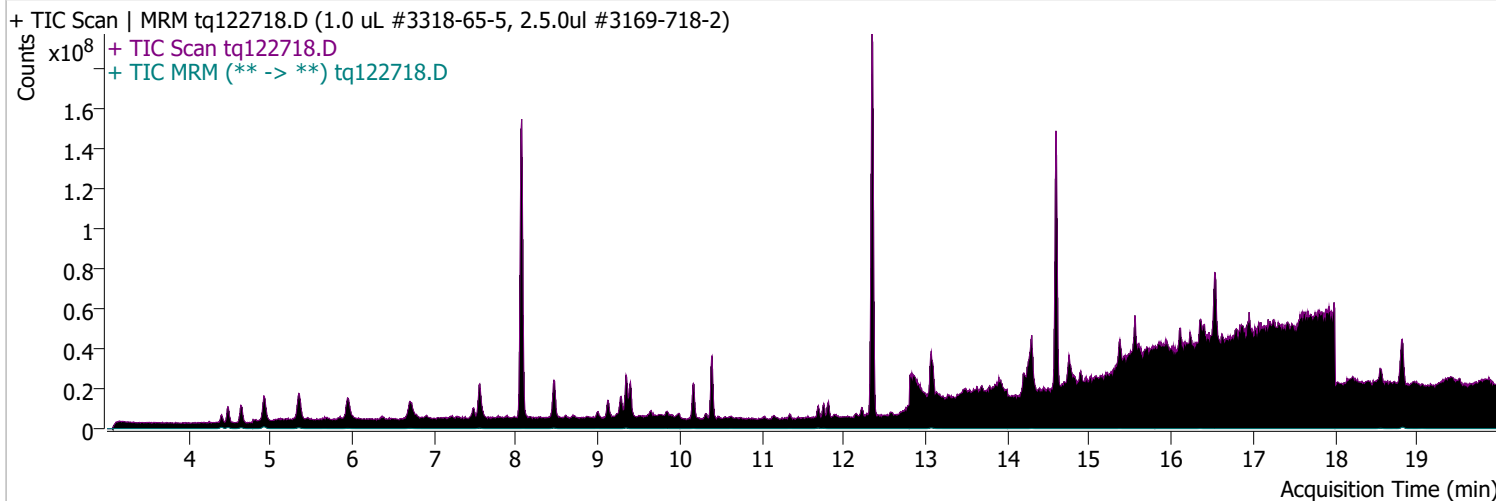
NEtFOSA



Quantitative Analysis Sample Report

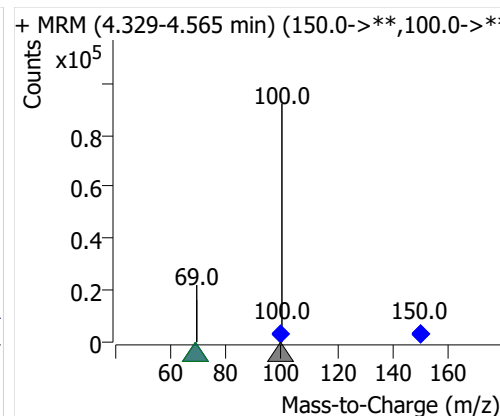
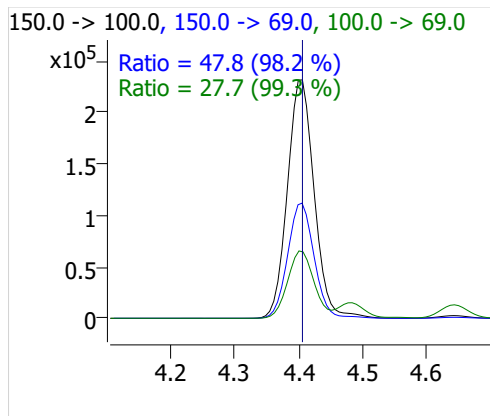
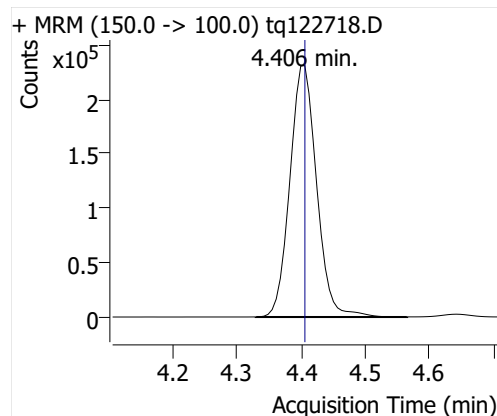
Batch Path D:\MassHunter\GCMS\1\data\27dec22a\QuantResults\tq22m1227a.batch.bin
 Analysis Time 1/3/2023 2:39 PM Analyst Name TAI\us32_usr_ins22923
 Report Time 1/5/2023 3:16:33 PM Reporter Name TAI\us32_usr_ins22923
 Last Calib Update 1/3/2023 2:39 PM Batch State Processed
 Quant Batch Version 10.1 Quant Report Version 10.1
 Acq. Time 12/27/2022 4:09 PM Data File tq122718.D
 Sample Type Cal Sample Name 1.0 uL #3318-65-5, 2.5.0ul #3169-718-2
 Dilution 1 Acq. Method tq22m1209

Sample Chromatogram

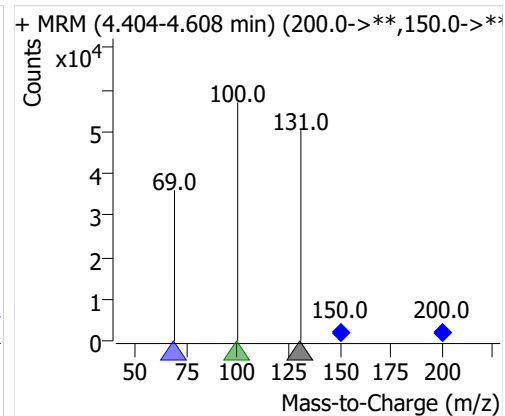
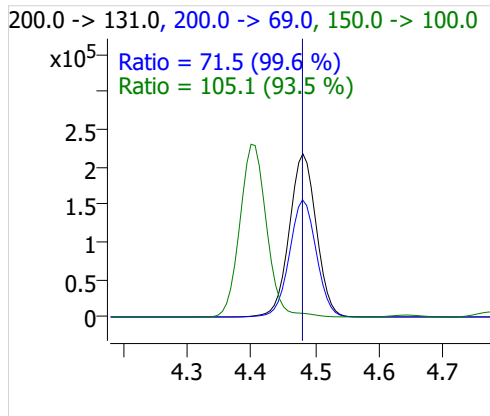
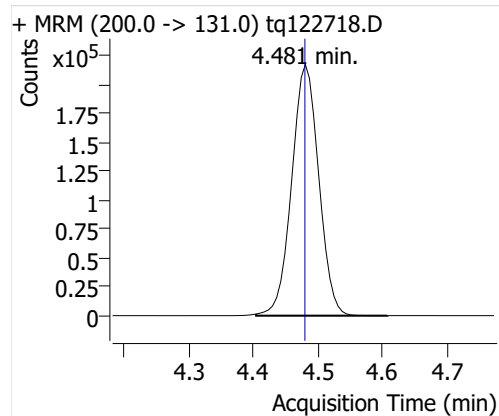


Compound	ISTD	RT	Resp.	ISTD Resp.	Resp. Ratio	Final Conc	Units
PFBA	6:2 FTOH-C13	4.406	670877	43515	15.4170	4.6008	ng
PFPeA	6:2 FTOH-C13	4.481	634625	43515	14.5839	4.9054	ng
PFHxA	6:2 FTOH-C13	4.639	301345	43515	6.9250	5.0023	ng
PFHpA	6:2 FTOH-C13	4.920	200625	43515	4.6104	4.8837	ng
PFOA	6:2 FTOH-C13	5.348	120381	43515	2.7664	4.5836	ng
4:2 FTOH	6:2 FTOH-C13	11.688	104201	43515	2.3946	5.0880	ng
5:2sFTOH	6:2 FTOH-C13	11.757	51478	43515	1.1830	4.9917	ng
7:2sFTOH	6:2 FTOH-C13	13.064	114157	43515	2.6234	5.1077	ng
6:2 FTOH	6:2 FTOH-C13	13.090	191438	43515	4.3993	4.8046	ng
8:2 FTOH-C13	6:2 FTOH-C13	14.300	17787	43515	0.4088	1.0494	ng
8:2 FTOH	6:2 FTOH-C13	14.300	60535	43515	1.3911	5.3606	ng
10:2 FTOH	6:2 FTOH-C13	15.369	23187	43515	0.5328	4.8883	ng
12:2 FTOH	6:2 FTOH-C13	16.357	92782	43515	2.1322	5.0993	ng
NMeFOSA	6:2 FTOH-C13	18.830	367649	43515	8.4487	5.3055	ng
NEtFOSA	6:2 FTOH-C13	18.831	331213	43515	7.6114	5.2804	ng

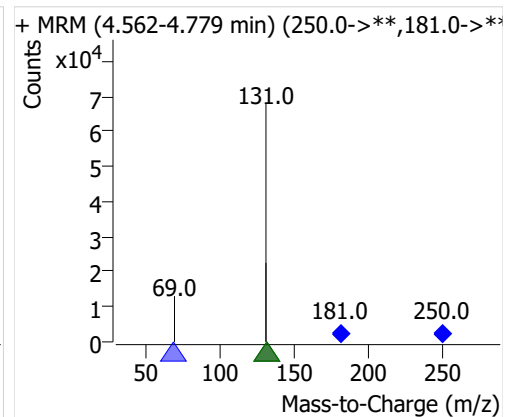
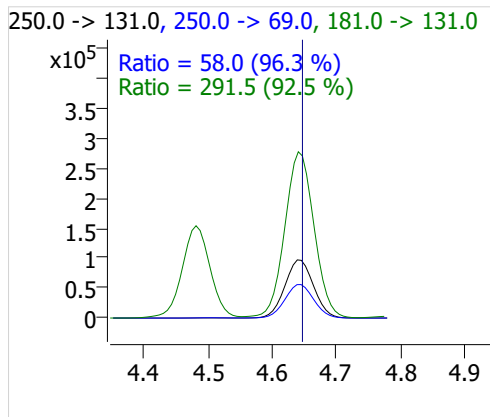
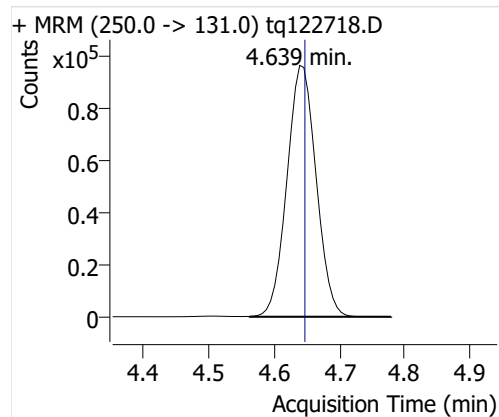
PFBA



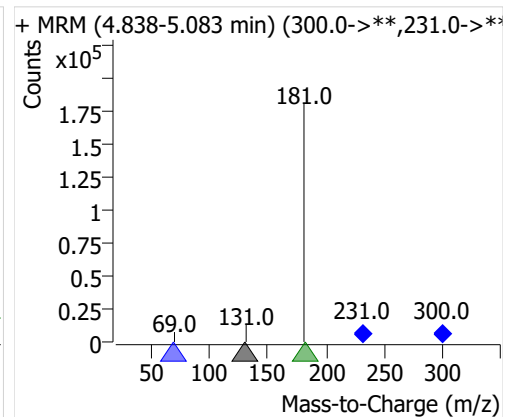
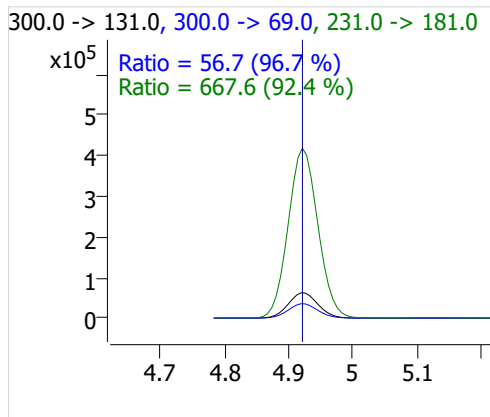
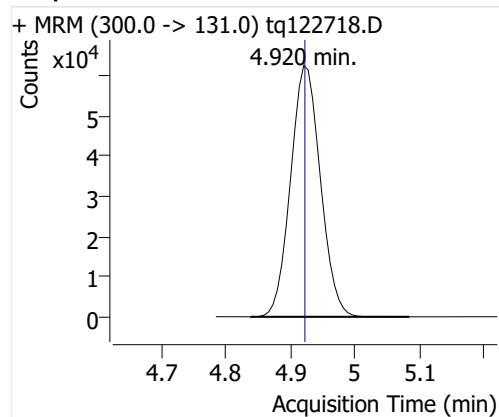
PFPeA



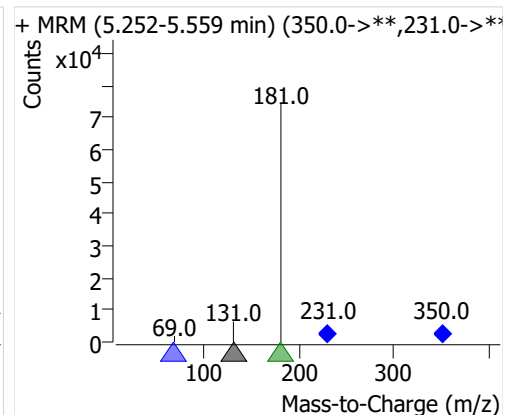
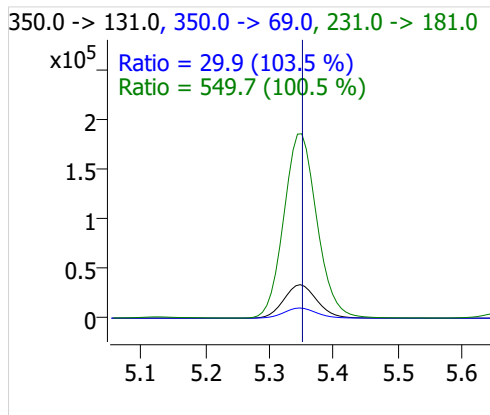
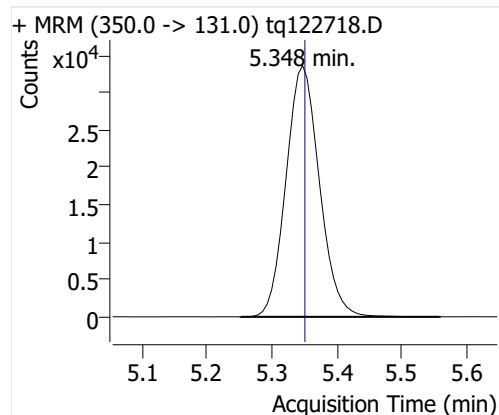
PFHxA



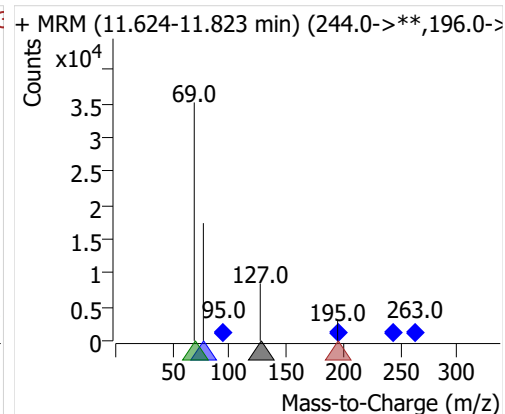
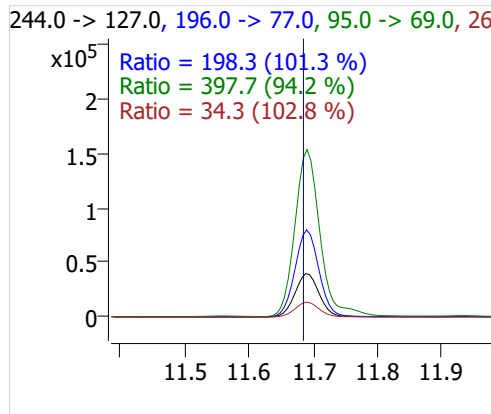
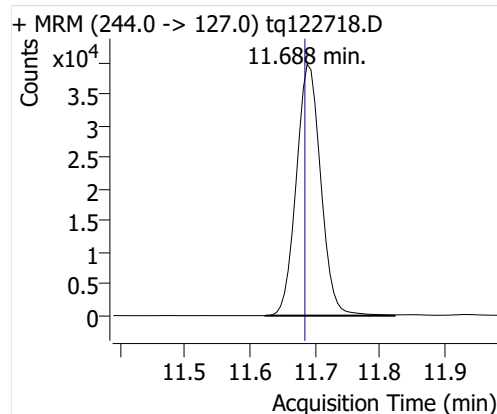
PFHpA



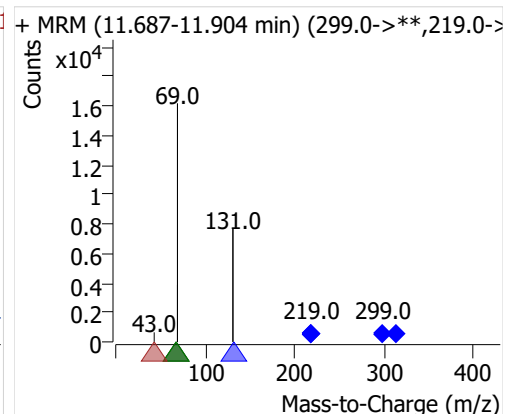
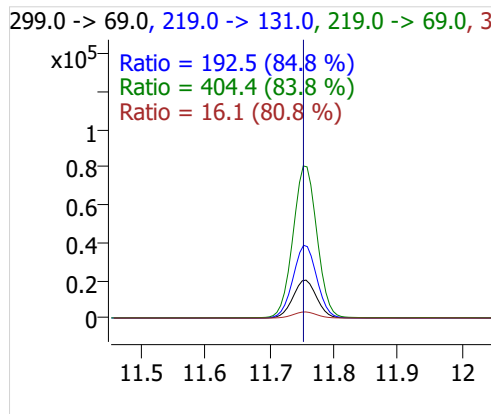
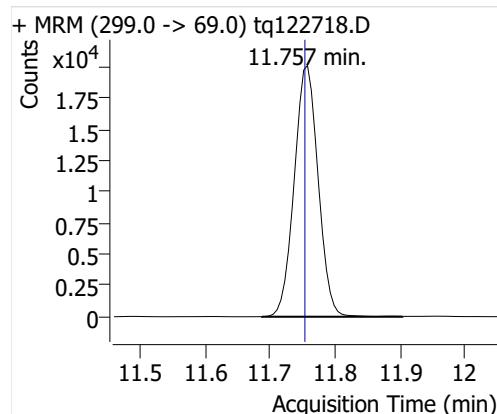
PFOA



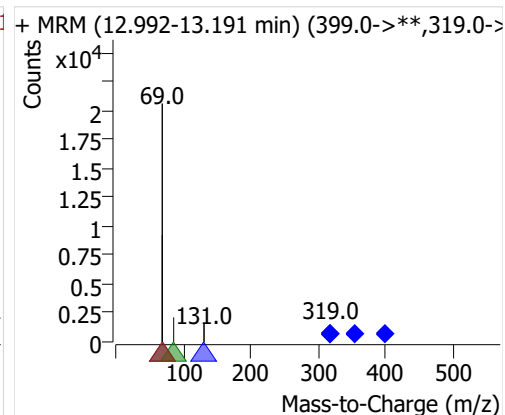
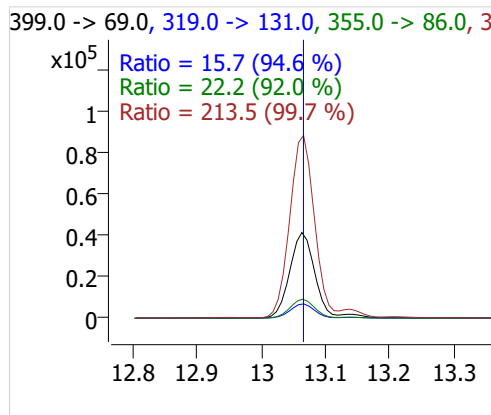
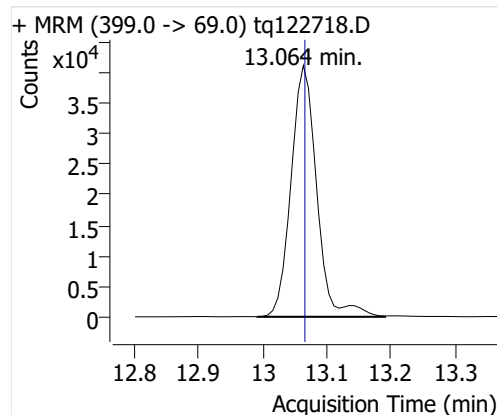
4:2 FTOH



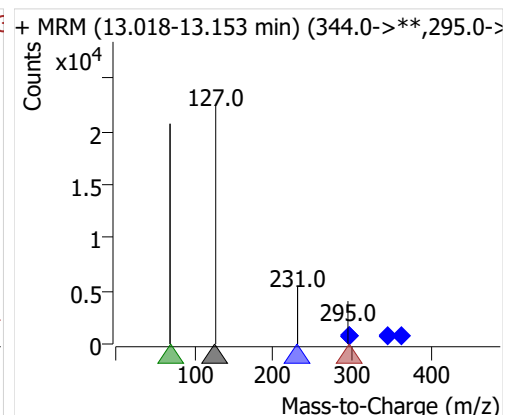
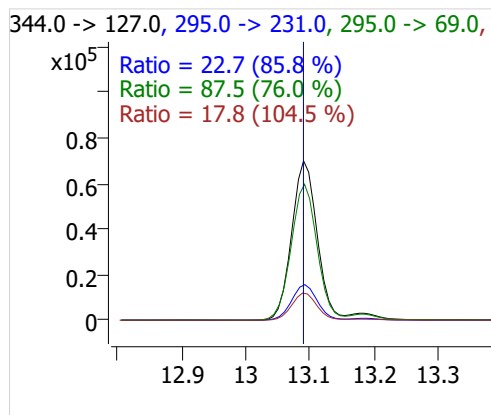
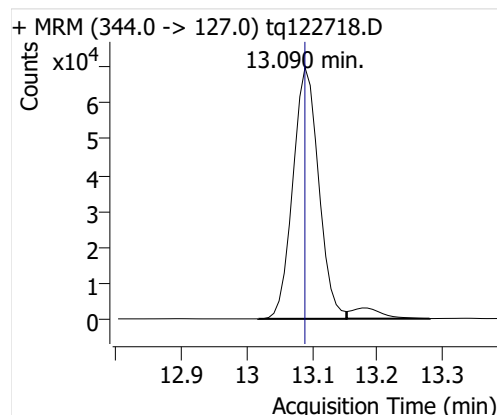
5:2sFTOH



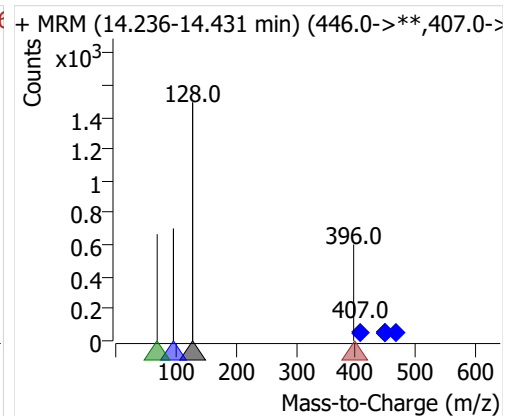
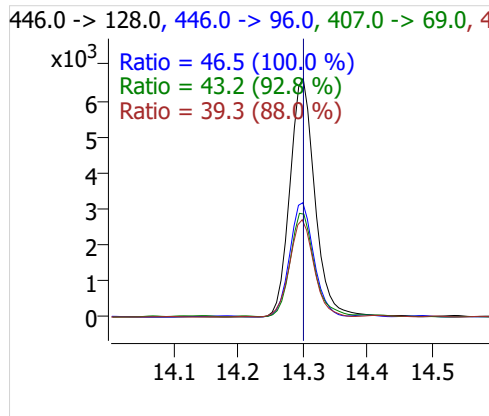
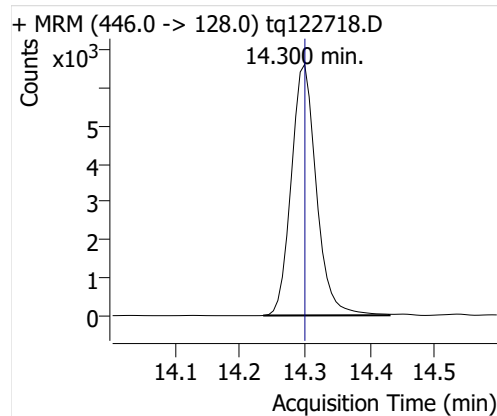
7:2sFTOH



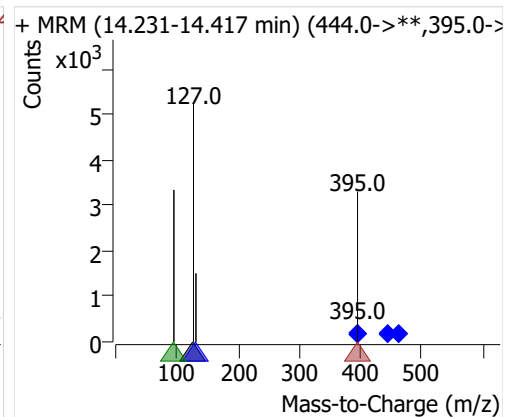
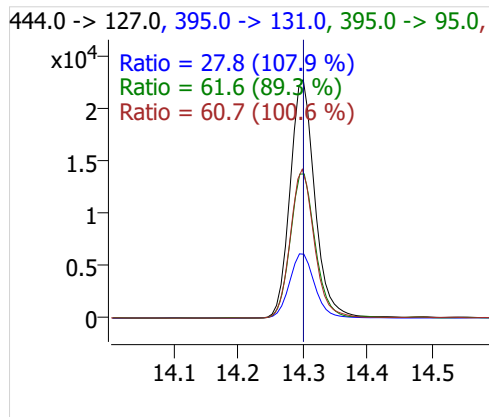
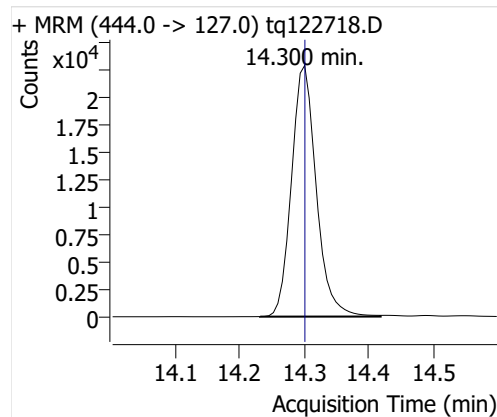
6:2 FTOH



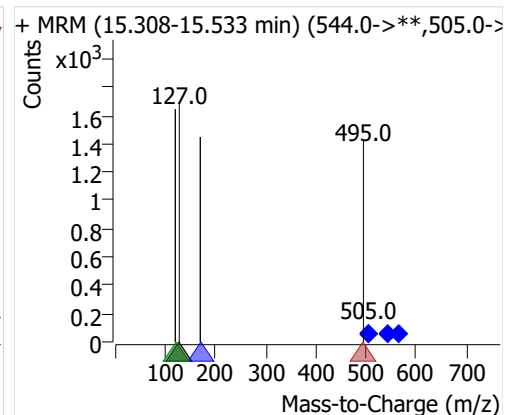
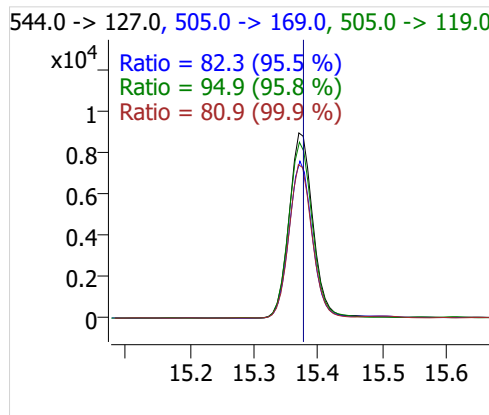
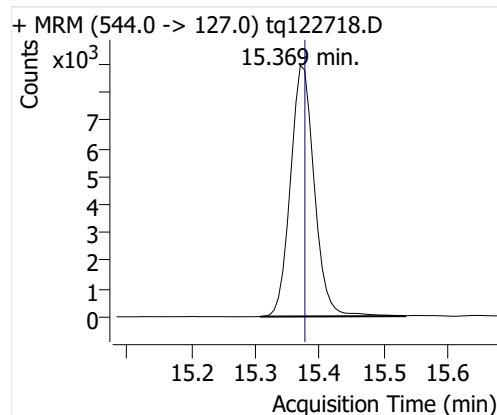
8:2 FTOH-C13



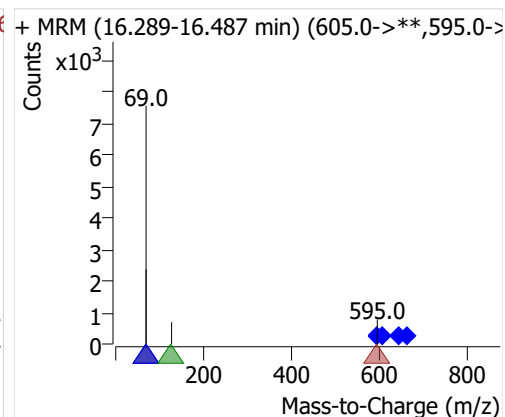
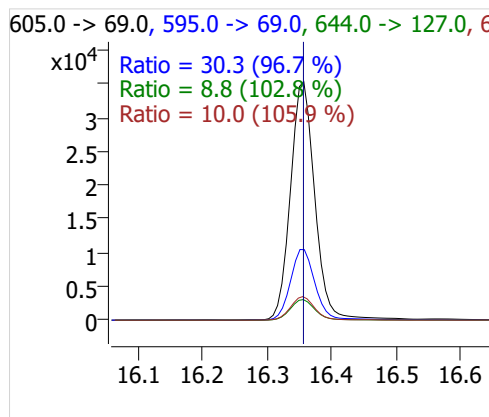
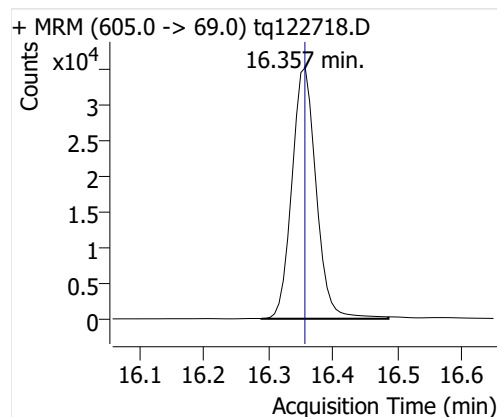
8:2 FTOH



10:2 FTOH

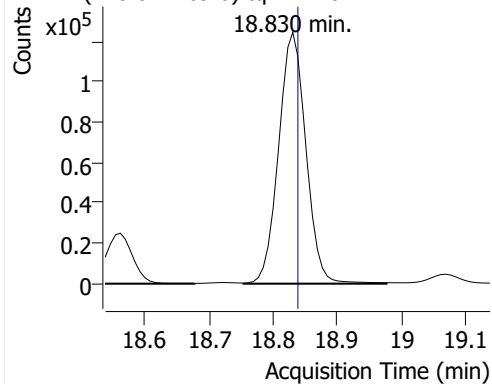


12:2 FTOH

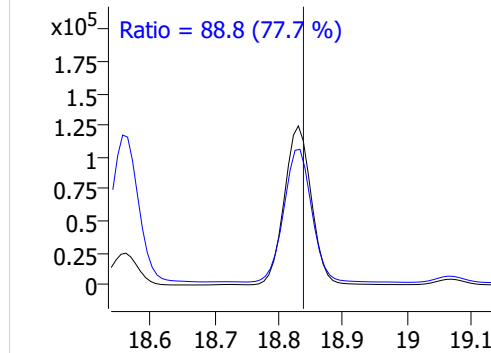


NMeFOSA

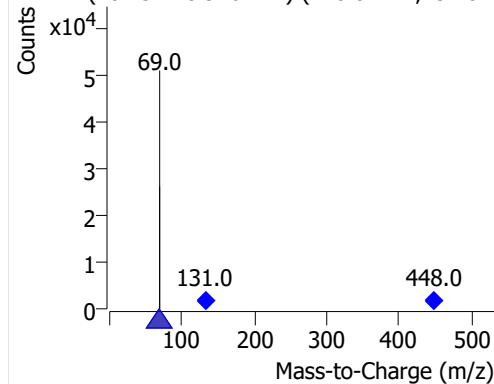
+ MRM (448.0 -> 69.0) tq122718.D



448.0 -> 69.0, 131.0 -> 69.0

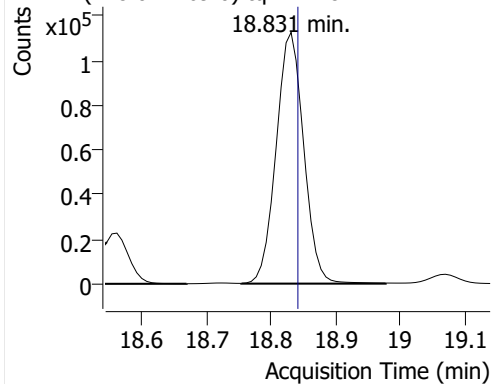


+ MRM (18.754-18.976 min) (448.0->**,131.0->

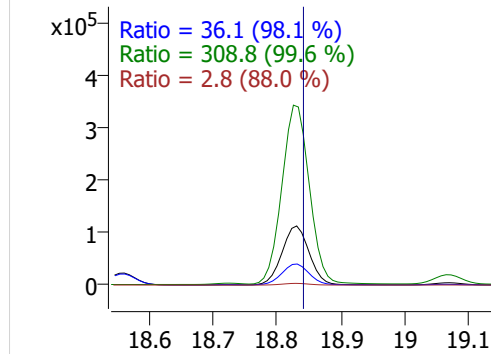


NEtFOSA

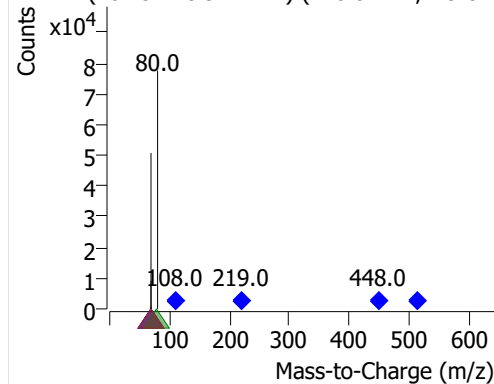
+ MRM (448.0 -> 69.0) tq122718.D



448.0 -> 69.0, 219.0 -> 69.0, 108.0 -> 80.0, 513.0 -> 80.0



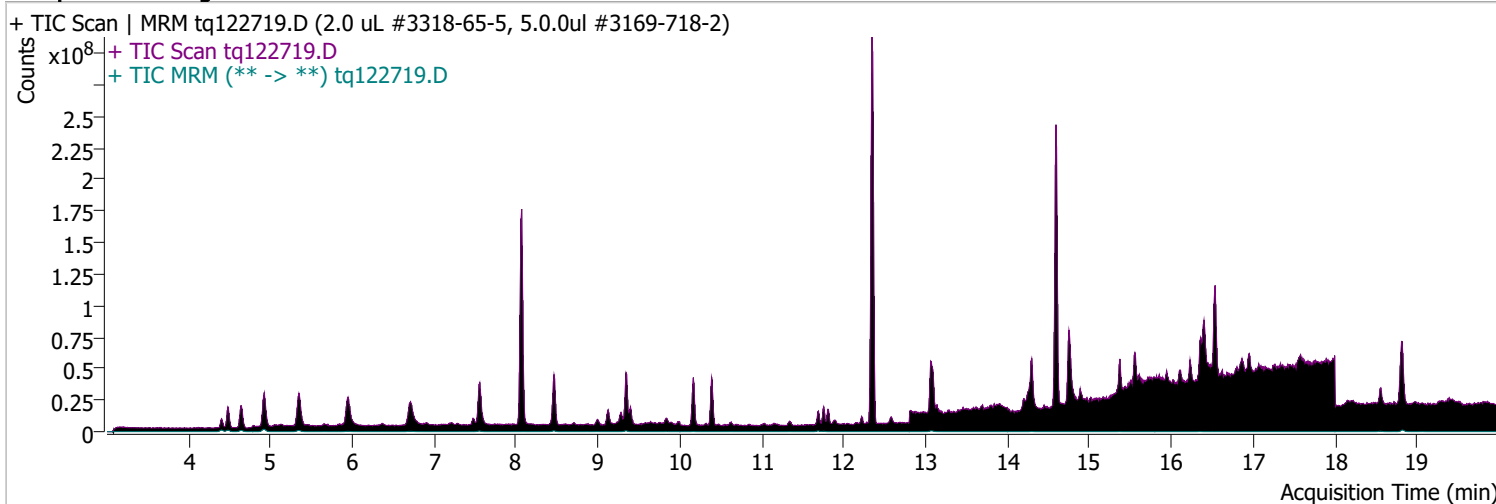
+ MRM (18.754-18.977 min) (448.0->**,219.0->



Quantitative Analysis Sample Report

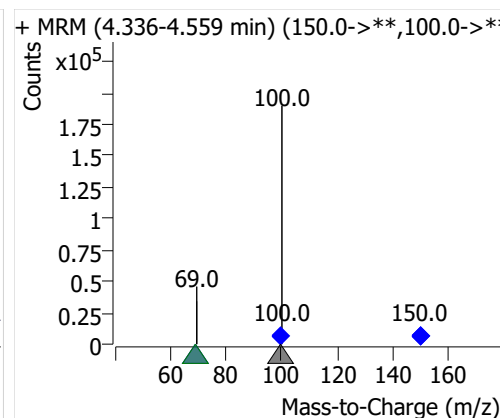
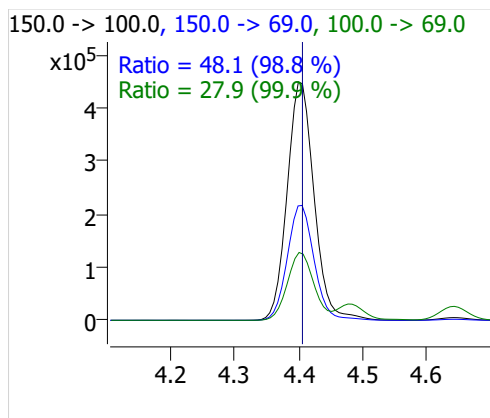
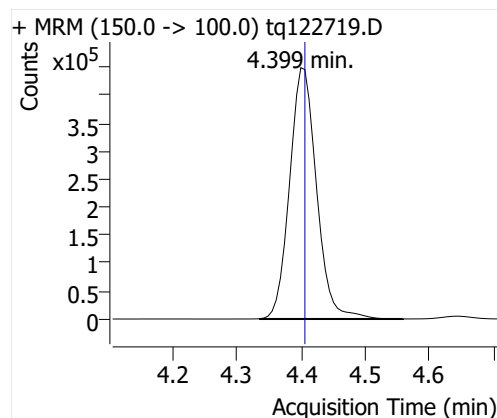
Batch Path D:\MassHunter\GCMS\1\data\27dec22a\QuantResults\tq22m1227a.batch.bin
 Analysis Time 1/3/2023 2:39 PM Analyst Name TAI\us32_usr_ins22923
 Report Time 1/5/2023 3:16:34 PM Reporter Name TAI\us32_usr_ins22923
 Last Calib Update 1/3/2023 2:39 PM Batch State Processed
 Quant Batch Version 10.1 Quant Report Version 10.1
 Acq. Time 12/27/2022 4:33 PM Data File tq122719.D
 Sample Type Cal Sample Name 2.0 uL #3318-65-5, 5.0.0ul #3169-718-2
 Dilution 1 Acq. Method tq22m1209

Sample Chromatogram

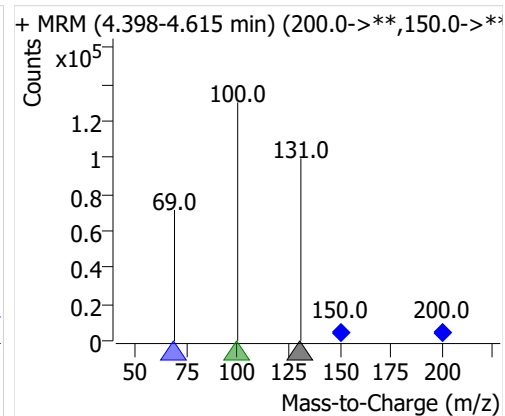
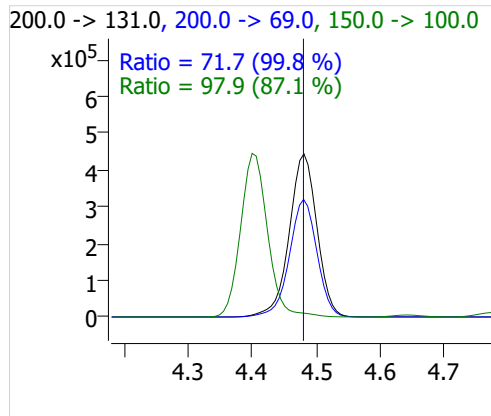
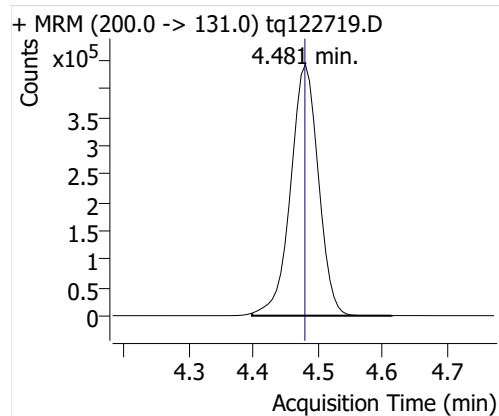


Compound	ISTD	RT	Resp.	ISTD Resp.	Resp. Ratio	Final Conc	Units
PFBA	6:2 FTOH-C13	4.399	1310874	43270	30.2953	9.0408	ng
PFPeA	6:2 FTOH-C13	4.481	1329875	43270	30.7344	10.3378	ng
PFHxA	6:2 FTOH-C13	4.639	620454	43270	14.3392	10.3578	ng
PFHpA	6:2 FTOH-C13	4.920	413734	43270	9.5617	10.1284	ng
PFOA	6:2 FTOH-C13	5.348	250079	43270	5.7795	9.5761	ng
4:2 FTOH	6:2 FTOH-C13	11.688	208650	43270	4.8220	10.2459	ng
5:2sFTOH	6:2 FTOH-C13	11.757	103876	43270	2.4007	10.1299	ng
7:2sFTOH	6:2 FTOH-C13	13.064	223559	43270	5.1666	10.0593	ng
6:2 FTOH	6:2 FTOH-C13	13.090	405454	43270	9.3703	10.2336	ng
8:2 FTOH-C13	6:2 FTOH-C13	14.293	17375	43270	0.4015	1.0309	ng
8:2 FTOH	6:2 FTOH-C13	14.300	121185	43270	2.8007	10.7922	ng
10:2 FTOH	6:2 FTOH-C13	15.370	45028	43270	1.0406	9.5468	ng
12:2 FTOH	6:2 FTOH-C13	16.357	181182	43270	4.1873	10.0142	ng
NMeFOSA	6:2 FTOH-C13	18.830	648919	43270	14.9970	9.4176	ng
NEtFOSA	6:2 FTOH-C13	18.831	592338	43270	13.6894	9.4971	ng

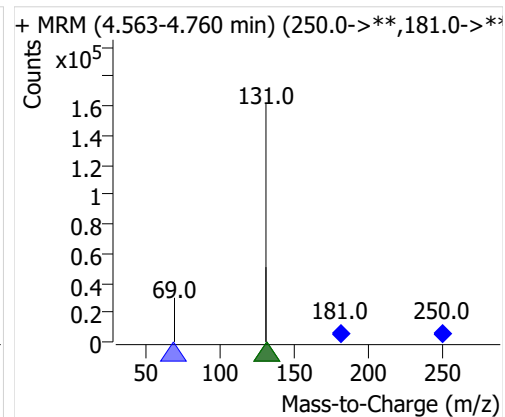
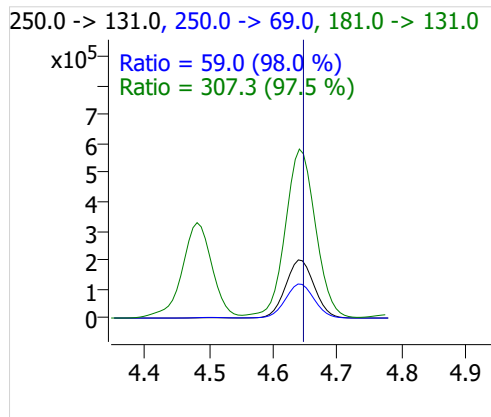
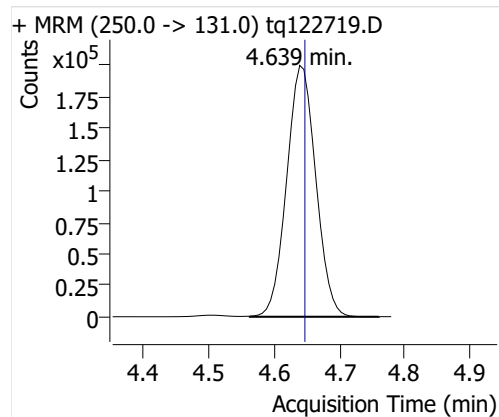
PFBA



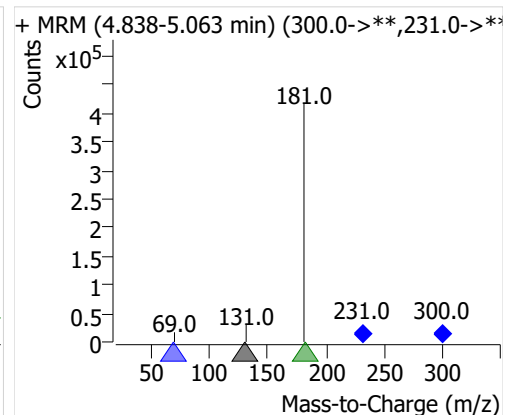
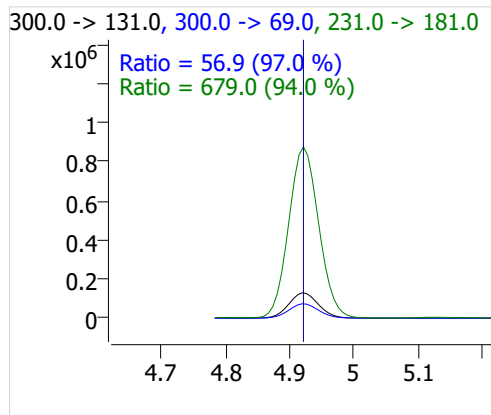
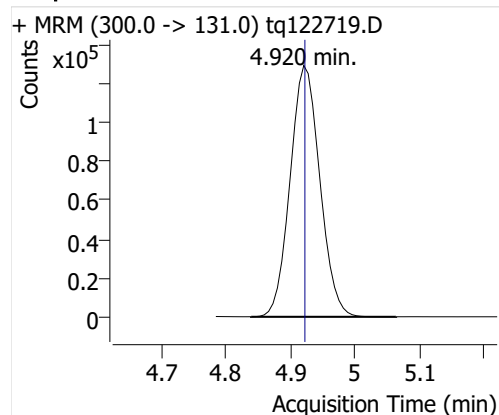
PFPeA



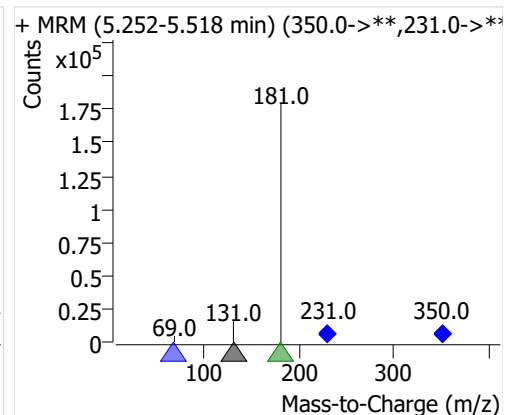
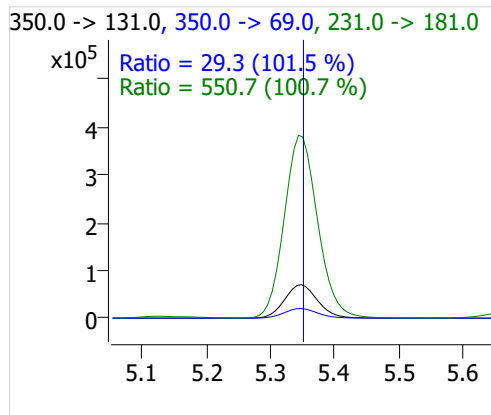
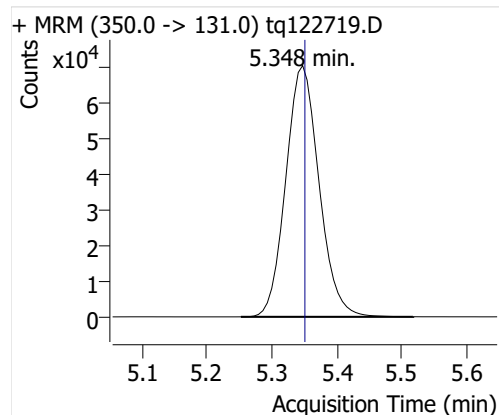
PFHxA



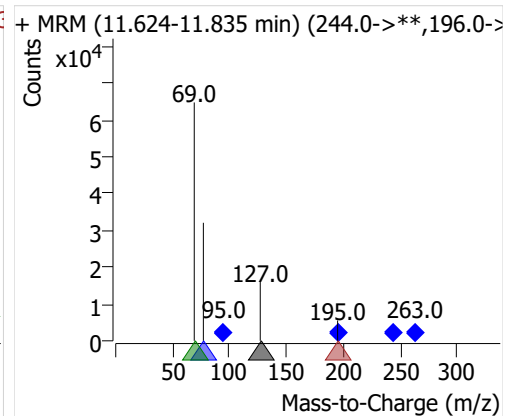
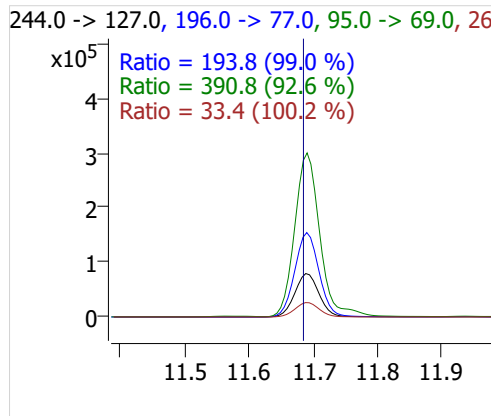
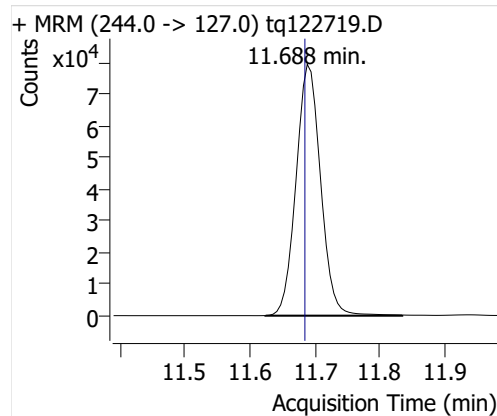
PFHpA



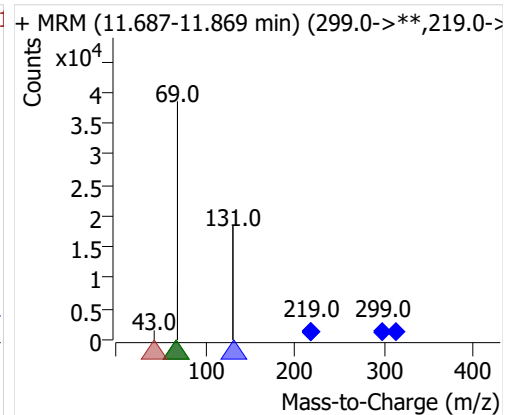
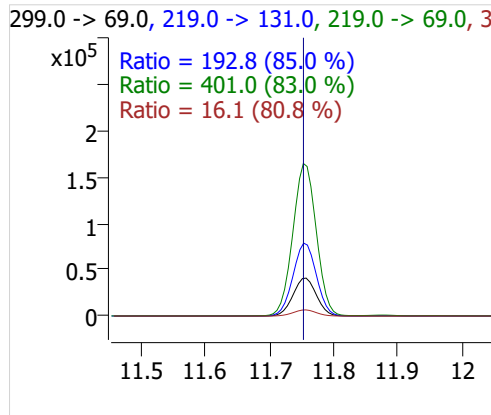
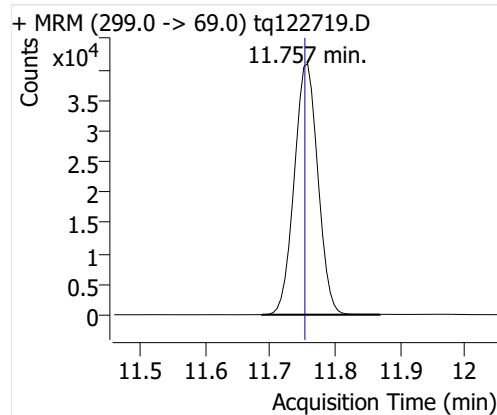
PFOA



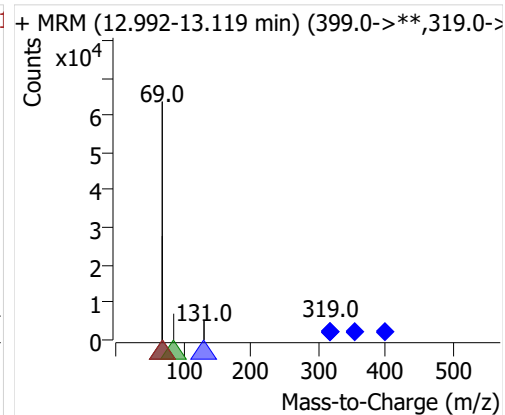
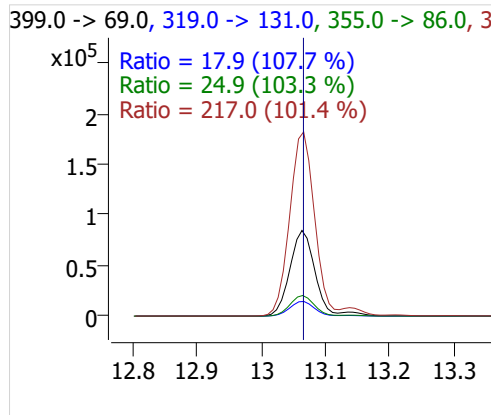
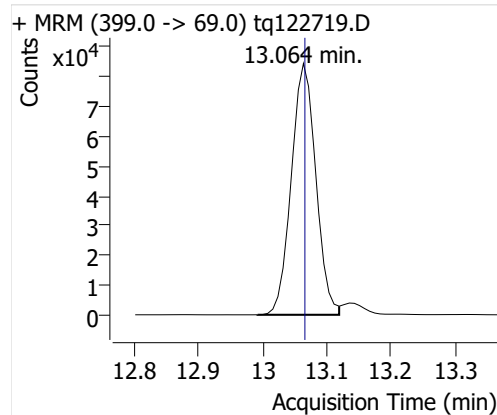
4:2 FTOH



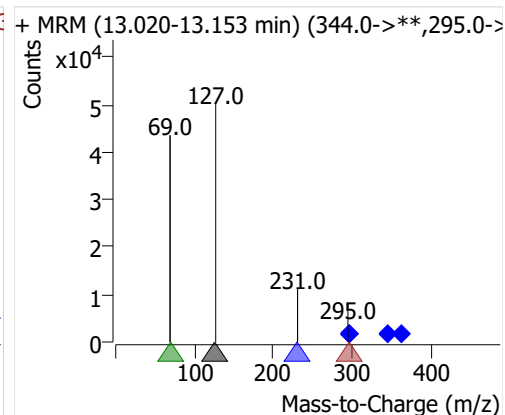
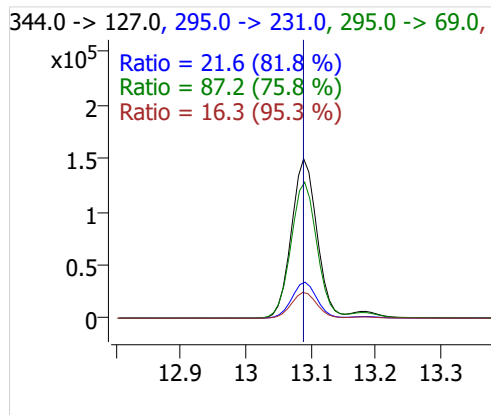
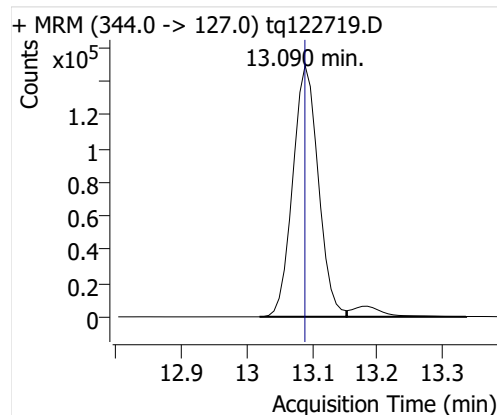
5:2sFTOH



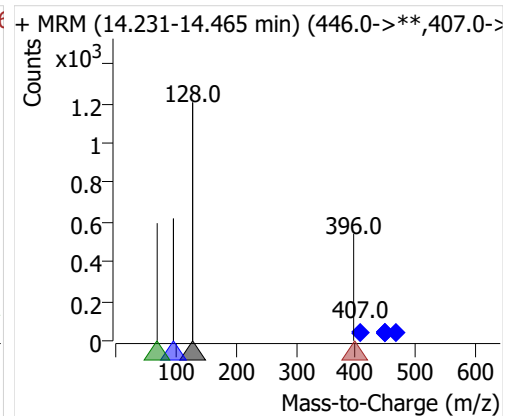
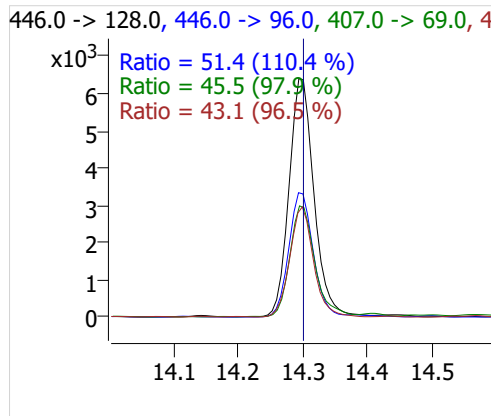
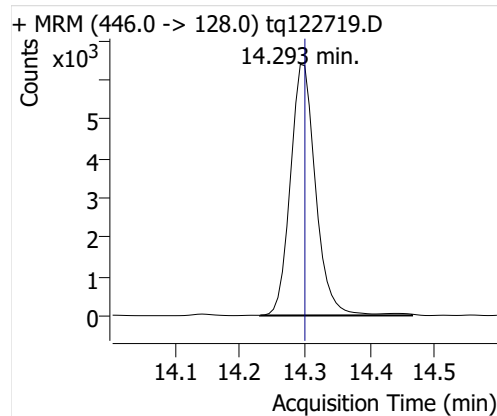
7:2sFTOH



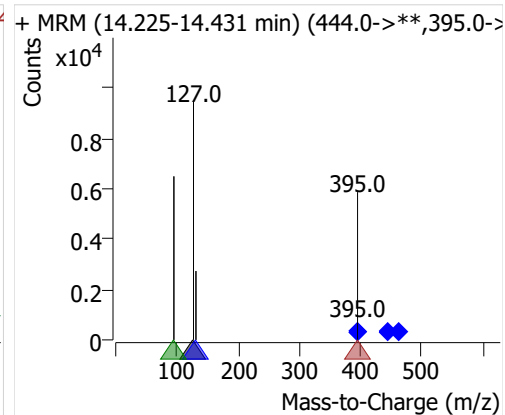
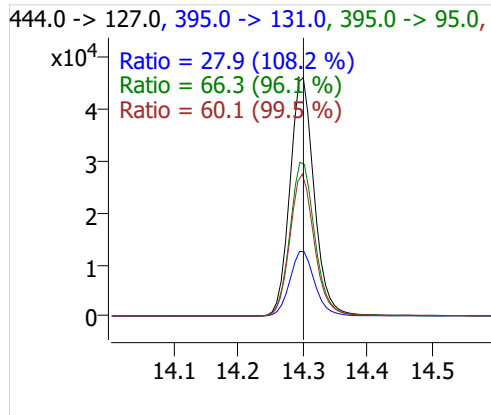
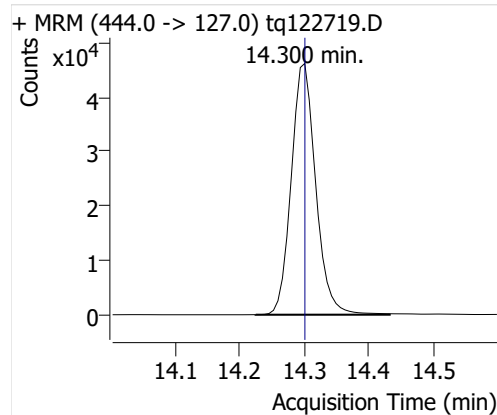
6:2 FTOH



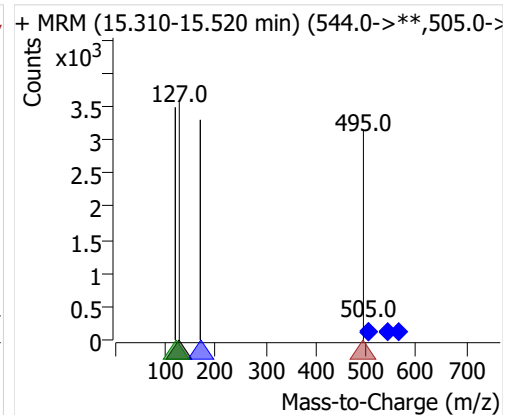
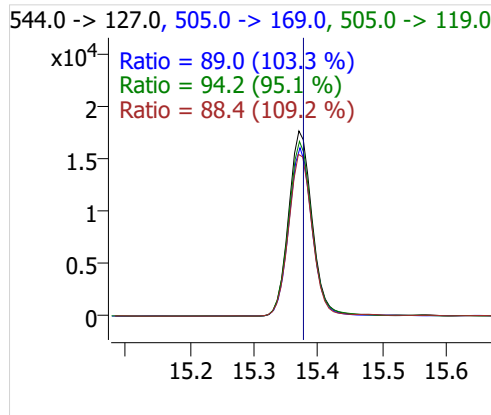
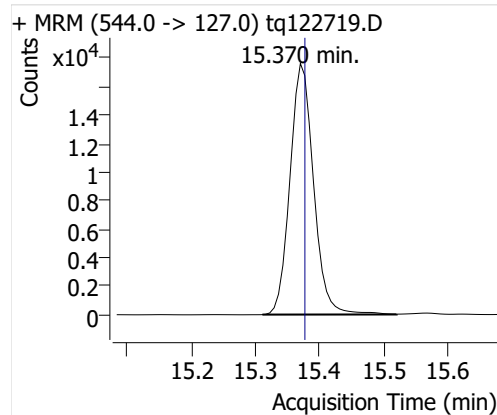
8:2 FTOH-C13



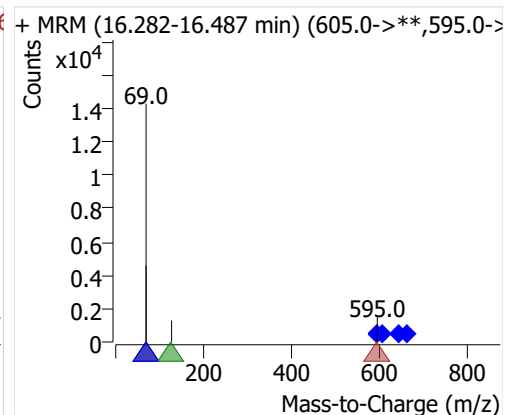
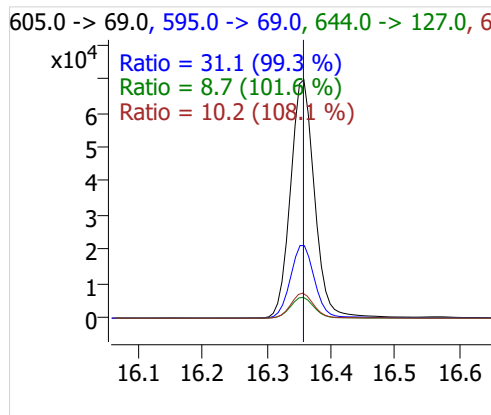
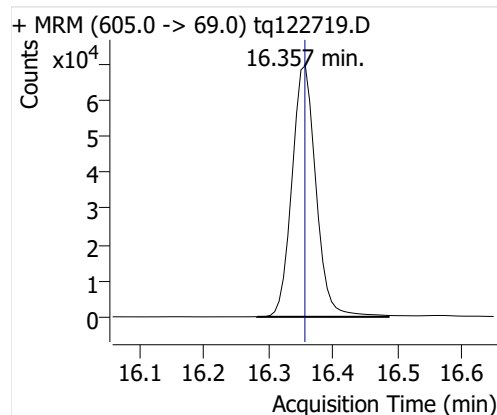
8:2 FTOH



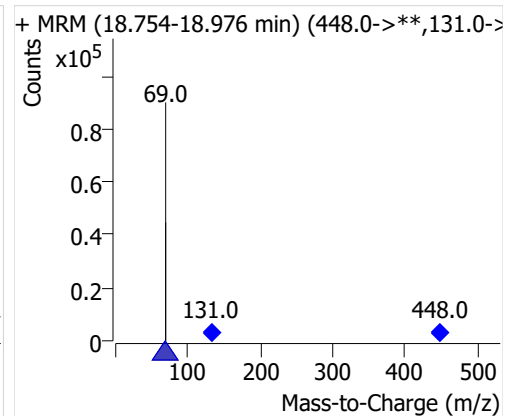
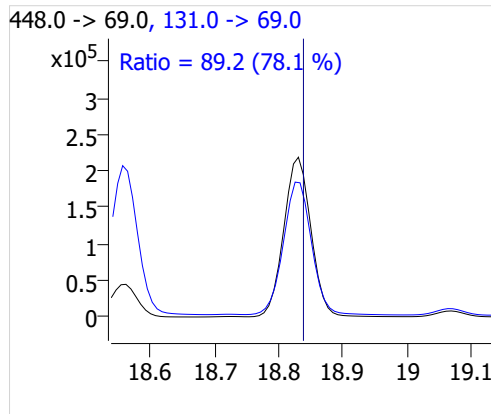
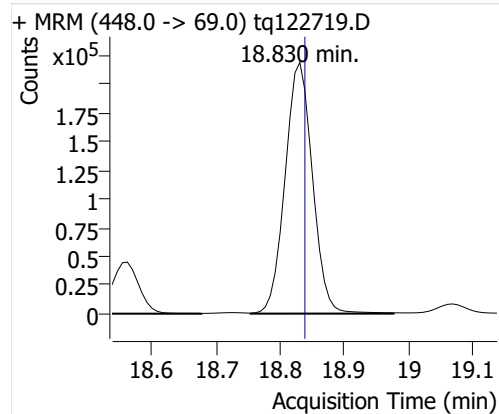
10:2 FTOH



12:2 FTOH



NMeFOSA



NEtFOSA

